

For Research Use Only

GCSH Polyclonal antibody, PBS Only

Catalog Number: 16726-1-PBS

Featured Product



Basic Information

Catalog Number:

16726-1-PBS

Size:

100ug, Concentration: 1 mg/ml by Nanodrop;

Source:

Rabbit

Isotype:

IgG

Immunogen Catalog Number:

AG10174

GenBank Accession Number:

BC000790

GeneID (NCBI):

2653

UNIPROT ID:

P23434

Full Name:

glycine cleavage system protein H (aminomethyl carrier)

Calculated MW:

19 kDa

Observed MW:

15 kDa

Purification Method:

Antigen affinity purification

Applications

Tested Applications:

WB, IHC, IF/ICC, IP, Indirect ELISA

Species Specificity:

human, mouse, rat

Background Information

GCSH (Glycine cleavage system H protein, mitochondrial) is a component of the glycine cleavage system loosely associated with the mitochondrial inner membrane and has lipoic acid as a prosthetic group. The full-length GCSH cDNA encodes a precursor protein of 173 amino acids and a mature protein of 125 amino acids. The lipoylation of H-protein occurs in mitochondria which probably contain an activated form of lipoic acid as well as other components required for the transfer of lipoic acid to the protein (PMID:2211640). Defects in GCSH are a cause of non-ketotic hyperglycinemia (NKH).

Storage

Storage:

Store at -80°C.

Storage Buffer:

PBS Only

For technical support and original validation data for this product please contact:

T: 1 (888) 4PTGLAB (1-888-478-4522) (toll free in USA), or 1(312) 455-8498 (outside USA)

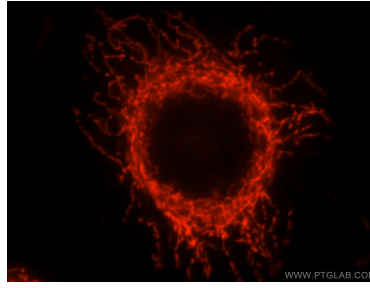
E: proteintech@ptglab.com
W: ptglab.com

This product is exclusively available under Proteintech Group brand and is not available to purchase from any other manufacturer.

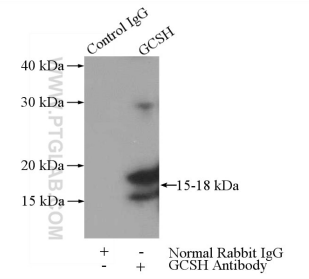
Selected Validation Data



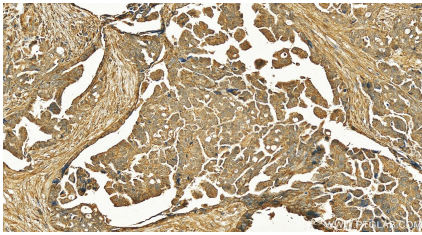
HEK-293 cells were subjected to SDS PAGE followed by western blot with 16726-1-AP (GCSH antibody) at dilution of 1:500 incubated at room temperature for 1.5 hours. This data was developed using the same antibody clone with 16726-1-PBS in a different storage buffer formulation.



Immunofluorescent analysis of MCF-7 cells, using GCSH antibody 16726-1-AP at 1:25 dilution and Rhodamine-labeled goat anti-rabbit IgG (red). This data was developed using the same antibody clone with 16726-1-PBS in a different storage buffer formulation.



IP result of anti-GCSH (IP:16726-1-AP, 3ug; Detection:16726-1-AP 1:1000) with mouse kidney tissue lysate 4000ug. This data was developed using the same antibody clone with 16726-1-PBS in a different storage buffer formulation.



Immunohistochemical analysis of paraffin-embedded human ovarian cancer slide using 16726-1-AP (GCSH antibody) at dilution of 1:200 (under 20x lens). Heat mediated antigen retrieval with Tris-EDTA buffer (pH 9.0). This data was developed using the same antibody clone with 16726-1-PBS in a different storage buffer formulation.