

For Research Use Only

RILPL1 Polyclonal antibody

Catalog Number: 16732-1-AP

Featured Product

1 Publications



Basic Information

Catalog Number:

16732-1-AP

Size:

150ul, Concentration: 900 ug/ml by Nanodrop and 313 ug/ml by Bradford method using BSA as the standard;

Source:

Rabbit

Isotype:

IgG

Immunogen Catalog Number:

AG10192

GenBank Accession Number:

BC080626

GeneID (NCBI):

353116

UNIPROT ID:

Q5EBL4

Full Name:

Rab interacting lysosomal protein-like 1

Calculated MW:

252 aa, 29 kDa

Observed MW:

50 kDa

Purification Method:

Antigen affinity purification

Recommended Dilutions:

WB 1:500-1:1000

Applications

Tested Applications:

WB, ELISA

Cited Applications:

IF

Species Specificity:

human, mouse, rat

Cited Species:

human

Positive Controls:

WB : HepG2 cells, HeLa cells

Notable Publications

Author	Pubmed ID	Journal	Application
Jiaxi Yu	35148830	Am J Hum Genet	IF

Storage

Storage:

Store at -20°C. Stable for one year after shipment.

Storage Buffer:

PBS with 0.02% sodium azide and 50% glycerol pH 7.3.

Aliquoting is unnecessary for -20°C storage

*** 20ul sizes contain 0.1% BSA

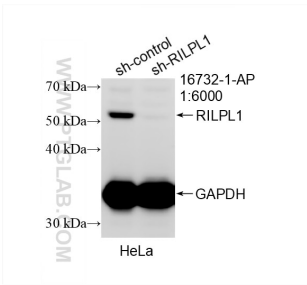
For technical support and original validation data for this product please contact:

T: 1 (888) 4PTGLAB (1-888-478-4522) (toll free in USA), or 1(312) 455-8498 (outside USA)

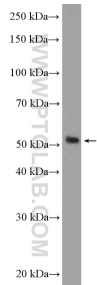
E: proteintech@ptglab.com
W: ptglab.com

This product is exclusively available under Proteintech Group brand and is not available to purchase from any other manufacturer.

Selected Validation Data



WB result of RILPL1 antibody (16732-1-AP; 1:6000; incubated at room temperature for 1.5 hours) with sh-Control and sh-RILPL1 transfected HeLa cells.



HepG2 cells were subjected to SDS PAGE followed by western blot with 16732-1-AP (RILPL1 Antibody) at dilution of 1:600 incubated at room temperature for 1.5 hours.