

For Research Use Only

# CH25H Polyclonal antibody

Catalog Number: 16734-1-AP



## Basic Information

**Catalog Number:**

16734-1-AP

**Size:**

150ul , Concentration: 140 µg/ml by Bradford method using BSA as the standard;

**Source:**

Rabbit

**Isotype:**

IgG

**Immunogen Catalog Number:**

AG9706

**GenBank Accession Number:**

BC017843

**GeneID (NCBI):**

9023

**UNIPROT ID:**

O95992

**Full Name:**

cholesterol 25-hydroxylase

**Calculated MW:**

272 aa, 32 kDa

**Purification Method:**

Antigen affinity purification

**Recommended Dilutions:**

IP 0.5-4.0 ug for 1.0-3.0 mg of total protein lysate  
IHC 1:50-1:500

## Applications

**Tested Applications:**

IP, IHC, ELISA

**Species Specificity:**

human, mouse, rat

**Note-IHC: suggested antigen retrieval with TE buffer pH 9.0; (\*) Alternatively, antigen retrieval may be performed with citrate buffer pH 6.0**

**Positive Controls:**

IP : mouse liver tissue,

IHC : mouse liver tissue,

## Storage

**Storage:**

Store at -20°C. Stable for one year after shipment.

**Storage Buffer:**

PBS with 0.02% sodium azide and 50% glycerol pH 7.3.

Aliquoting is unnecessary for -20°C storage

\*\*\* 20ul sizes contain 0.1% BSA

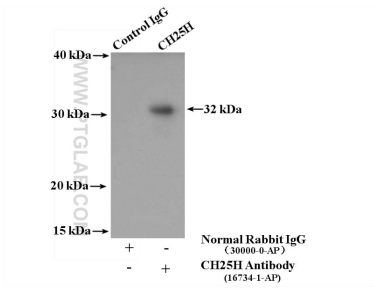
For technical support and original validation data for this product please contact:

T: 1 (888) 4PTGLAB (1-888-478-4522) (toll free in USA), or 1(312) 455-8498 (outside USA)

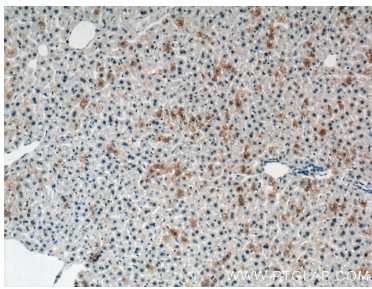
E: [proteintech@ptglab.com](mailto:proteintech@ptglab.com)  
W: [ptglab.com](http://ptglab.com)

This product is exclusively available under Proteintech Group brand and is not available to purchase from any other manufacturer.

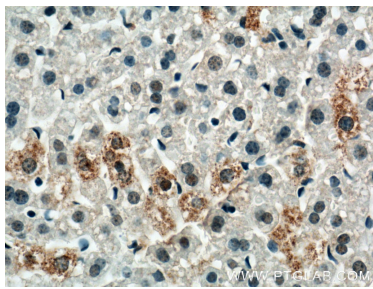
Selected Validation Data



IP result of anti-CH25H (IP:16734-1-AP, 4ug; Detection:16734-1-AP 1:300) with mouse liver tissue lysate 5200ug.



Immunohistochemical analysis of paraffin-embedded mouse liver tissue slide using 16734-1-AP (CH25H Antibody) at dilution of 1:200 (under 10x lens). Heat mediated antigen retrieval with Tris-EDTA buffer (pH 9.0).



Immunohistochemical analysis of paraffin-embedded mouse liver tissue slide using 16734-1-AP (CH25H Antibody) at dilution of 1:200 (under 40x lens). Heat mediated antigen retrieval with Tris-EDTA buffer (pH 9.0).