

For Research Use Only

MRPS16 Polyclonal antibody

Catalog Number: 16735-1-AP

Featured Product

18 Publications



Basic Information

Catalog Number:

16735-1-AP

Size:

150ul, Concentration: 400 ug/ml by Nanodrop and 200 ug/ml by Bradford method using BSA as the standard;

Source:

Rabbit

Isotype:

IgG

Immunogen Catalog Number:

AG9749

GenBank Accession Number:

BC021106

GeneID (NCBI):

51021

UNIPROT ID:

Q9Y3D3

Full Name:

mitochondrial ribosomal protein S16

Calculated MW:

137 aa, 15 kDa

Observed MW:

15 kDa

Purification Method:

Antigen affinity purification

Recommended Dilutions:

WB 1:500-1:2000

IP 0.5-4.0 ug for 1.0-3.0 mg of total protein lysate

IF/ICC 1:50-1:500

Applications

Tested Applications:

WB, IF/ICC, IP, ELISA

Cited Applications:

WB

Species Specificity:

human, mouse, rat

Cited Species:

human, mouse

Positive Controls:

WB : HEK-293 cells, HeLa cells, Jurkat cells, HepG2 cells, mouse liver tissue, rat liver tissue

IP : HEK-293 cells,

IF/ICC : HepG2 cells,

Notable Publications

Author	Pubmed ID	Journal	Application
Ying Shu	36314841	EMBO J	WB
Nicola Ferreira	31721250	EMBO J	WB
Richard G Lee	32576663	J Cell Sci	WB

Storage

Storage:

Store at -20°C. Stable for one year after shipment.

Storage Buffer:

PBS with 0.02% sodium azide and 50% glycerol pH 7.3.

Aliquoting is unnecessary for -20°C storage

*** 20ul sizes contain 0.1% BSA

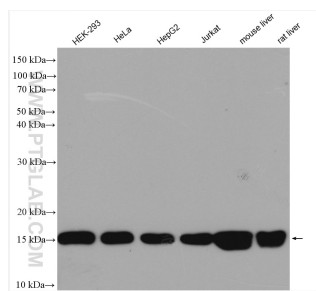
For technical support and original validation data for this product please contact:

T: 1 (888) 4PTGLAB (1-888-478-4522) (toll free in USA), or 1(312) 455-8498 (outside USA)

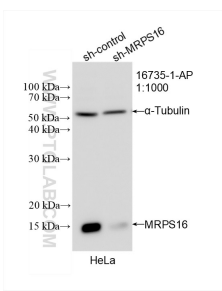
E: proteintech@ptglab.com
W: ptglab.com

This product is exclusively available under Proteintech Group brand and is not available to purchase from any other manufacturer.

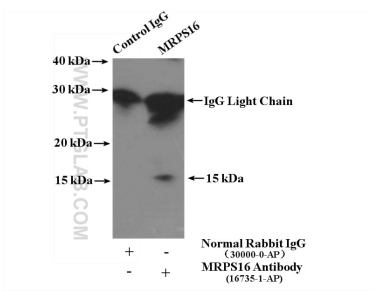
Selected Validation Data



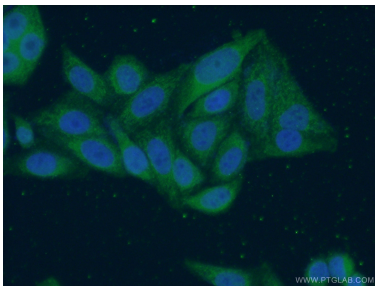
Various lysates were subjected to SDS PAGE followed by western blot with 16735-1-AP (MRPS16 antibody) at dilution of 1:1000 incubated at room temperature for 1.5 hours.



WB result of MRPS16 antibody (16735-1-AP; 1:1000; incubated at room temperature for 1.5 hours) with sh-Control and sh-MRPS16 transfected HeLa cells.



IP result of anti-MRPS16 (IP:16735-1-AP, 4ug; Detection:16735-1-AP 1:500) with HEK-293 cells lysate 1480ug.



Immunofluorescent analysis of (4% PFA) fixed HepG2 cells using 16735-1-AP (MRPS16 antibody) at dilution of 1:50 and Alexa Fluor 488-conjugated AffiniPure Goat Anti-Rabbit IgG(H+L).