

For Research Use Only

# TASP1 Polyclonal antibody, PBS Only

Catalog Number: 16739-1-PBS

Featured Product



## Basic Information

**Catalog Number:**

16739-1-PBS

**Size:**

100ug, Concentration: 1 mg/ml by Nanodrop;

**Source:**

Rabbit

**Isotype:**

IgG

**Immunogen Catalog Number:**

AG9918

**GenBank Accession Number:**

BC025266

**GeneID (NCBI):**

55617

**UNIPROT ID:**

Q9H6P5

**Full Name:**

taspase, threonine aspartase, 1

**Calculated MW:**

420 aa, 44 kDa

**Observed MW:**

50 kDa

**Purification Method:**

Antigen affinity purification

## Applications

**Tested Applications:**

WB, IHC, IF/ICC, Indirect ELISA

**Species Specificity:**

human

## Background Information

Threonine aspartase 1 (TASP1), a particularly conserved protease that cleaves mixed lineage leukemia 1 (MLL), regulates the expression of homeotic genes and is involved in the occurrence of cancer. TASP1 drives cell cycle progression and coordinates cell proliferation and apoptosis (PMID: 33767369). Aberrant expression of TASP1 has been found in numerous liquid and solid malignancies, including Leukaemia, breast cancer, lung cancer, head and neck cancer, brain cancer, colon cancer, glioblastoma and melanoma. TASP1 plays a key role in cancer cell proliferation and apoptosis and can inhibit tumor growth after knockout (PMID: 32071545, 34012990).

## Storage

**Storage:**

Store at -80°C.

**Storage Buffer:**

PBS only, pH7.3

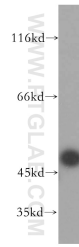
For technical support and original validation data for this product please contact:

T: 1 (888) 4PTGLAB (1-888-478-4522) (toll free in USA), or 1(312) 455-8498 (outside USA)

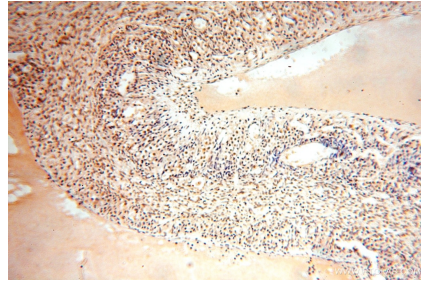
E: [proteintech@ptglab.com](mailto:proteintech@ptglab.com)  
W: [ptglab.com](http://ptglab.com)

This product is exclusively available under Proteintech Group brand and is not available to purchase from any other manufacturer.

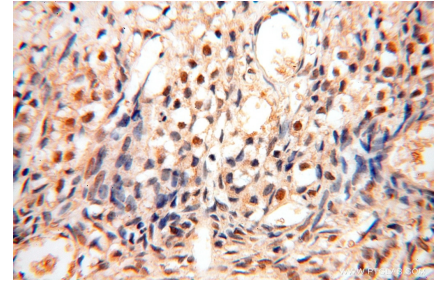
## Selected Validation Data



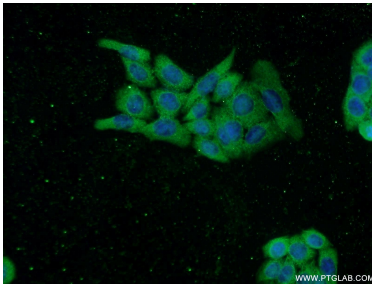
HEK-293 cells were subjected to SDS PAGE followed by western blot with 16739-1-AP (TASP1 antibody) at dilution of 1:500 incubated at room temperature for 1.5 hours. This data was developed using the same antibody clone with 16739-1-PBS in a different storage buffer formulation.



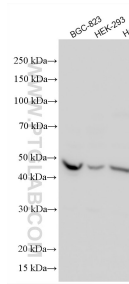
Immunohistochemical analysis of paraffin-embedded human ovary using 16739-1-AP (TASP1 antibody) at dilution of 1:100 (under 10x lens). This data was developed using the same antibody clone with 16739-1-PBS in a different storage buffer formulation.



Immunohistochemical analysis of paraffin-embedded human ovary using 16739-1-AP (TASP1 antibody) at dilution of 1:100 (under 40x lens). This data was developed using the same antibody clone with 16739-1-PBS in a different storage buffer formulation.



Immunofluorescent analysis of HeLa cells using 16739-1-AP (TASP1 antibody) at dilution of 1:50 and Alexa Fluor 488-conjugated AffiniPure Goat Anti-Rabbit IgG(H+L). This data was developed using the same antibody clone with 16739-1-PBS in a different storage buffer formulation.



Various lysates were subjected to SDS PAGE followed by western blot with 16739-1-AP (TASP1 antibody) at dilution of 1:1000 incubated at room temperature for 1.5 hours. This data was developed using the same antibody clone with 16739-1-PBS in a different storage buffer formulation.