

For Research Use Only

PHKG1 Polyclonal antibody

Catalog Number: 16743-1-AP

2 Publications



Basic Information

Catalog Number:

16743-1-AP

Size:

150ul, Concentration: 450 ug/ml by Nanodrop and 280 ug/ml by Bradford method using BSA as the standard;

Source:

Rabbit

Isotype:

IgG

Immunogen Catalog Number:

AG10032

GenBank Accession Number:

BC051327

GeneID (NCBI):

5260

UNIPROT ID:

Q16816

Full Name:

phosphorylase kinase, gamma 1 (muscle)

Calculated MW:

387 aa, 45 kDa

Observed MW:

40 kDa

Purification Method:

Antigen affinity purification

Recommended Dilutions:

WB 1:1000-1:5000

IP 0.5-4.0 ug for 1.0-3.0 mg of total protein lysate

IHC 1:50-1:500

Applications

Tested Applications:

WB, IP, IHC, ELISA

Cited Applications:

WB

Species Specificity:

human, mouse, rat

Cited Species:

pig

Note-IHC: suggested antigen retrieval with TE buffer pH 9.0; (*) Alternatively, antigen retrieval may be performed with citrate buffer pH 6.0

Positive Controls:

WB: mouse skeletal muscle tissue, rat skeletal muscle tissue

IP: mouse skeletal muscle tissue,

IHC: mouse skeletal muscle tissue,

Background Information

PHKG1(Phosphorylase b kinase gamma catalytic chain, skeletal muscle isoform) is also named as phosphorylase kinase subunit gamma-1, PHKG and belongs to the CAMK Ser/Thr protein kinase family. Phosphorylase kinase is a crucial glycogenolytic regulatory enzyme. The holoenzymes are composed of 16 subunit proteins containing equimolar ratios of 4 subunit types known as alpha, beta, gamma, and delta. This protein is the skeletal muscle isoform of phosphorylase kinase and kinetic differences exist between the cardiac and adult skeletal muscle enzymes, and the liver and skeletal muscle enzymes are known to be separate isozymes.

Notable Publications

Author	Pubmed ID	Journal	Application
Junwu Ma	25340394	PLoS Genet	WB
Haigang Cao	38823637	J Biol Chem	WB

Storage

Storage:

Store at -20°C. Stable for one year after shipment.

Storage Buffer:

PBS with 0.02% sodium azide and 50% glycerol pH 7.3.

Aliquoting is unnecessary for -20°C storage

*** 20ul sizes contain 0.1% BSA

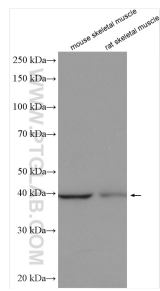
For technical support and original validation data for this product please contact:

T: 1 (888) 4PTGLAB (1-888-478-4522) (toll free in USA), or 1(312) 455-8498 (outside USA)

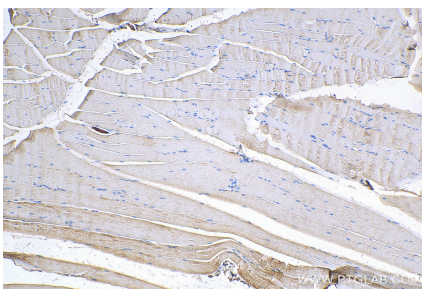
E: proteintech@ptglab.com
W: ptglab.com

This product is exclusively available under Proteintech Group brand and is not available to purchase from any other manufacturer.

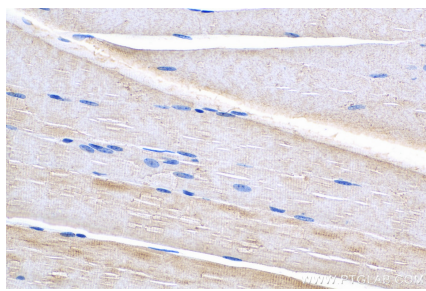
Selected Validation Data



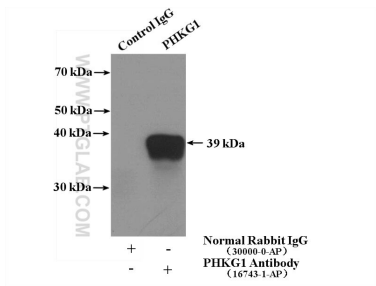
Various lysates were subjected to SDS PAGE followed by western blot with 16743-1-AP (PHKG1 antibody) at dilution of 1:2500 incubated at room temperature for 1.5 hours.



Immunohistochemical analysis of paraffin-embedded mouse skeletal muscle tissue slide using 16743-1-AP (PHKG1 antibody) at dilution of 1:200 (under 10x lens). Heat mediated antigen retrieval with Tris-EDTA buffer (pH 9.0).



Immunohistochemical analysis of paraffin-embedded mouse skeletal muscle tissue slide using 16743-1-AP (PHKG1 antibody) at dilution of 1:200 (under 40x lens). Heat mediated antigen retrieval with Tris-EDTA buffer (pH 9.0).



IP result of anti-PHKG1 (IP:16743-1-AP, 4ug; Detection:16743-1-AP 1:600) with mouse skeletal muscle tissue lysate 4000ug.