

For Research Use Only

# CENPN Polyclonal antibody

Catalog Number: 16751-1-AP

Featured Product

3 Publications



## Basic Information

Catalog Number:

16751-1-AP

Size:

150ul, Concentration: 400 ug/ml by Nanodrop and 287 ug/ml by Bradford method using BSA as the standard;

Source:

Rabbit

Isotype:

IgG

Immunogen Catalog Number:

AG10219

GenBank Accession Number:

BC008972

GeneID (NCBI):

55839

UNIPROT ID:

Q96H22

Full Name:

centromere protein N

Calculated MW:

339 aa, 40 kDa

Observed MW:

40 kDa, 25-30 kDa

Purification Method:

Antigen affinity purification

Recommended Dilutions:

WB 1:500-1:2000

## Applications

Tested Applications:

WB, ELISA

Cited Applications:

WB, IHC

Species Specificity:

human, mouse, rat

Cited Species:

human

Positive Controls:

WB : MCF-7 cells,

## Background Information

CENPN, also named as C16orf60 and ICEN32, is a component of the CENPA-NAC complex. It is required for chromosome congression and efficiently align the chromosomes on a metaphase plate. CENPN has 4 isoforms with MW 24 kDa and 35-41 kDa.

## Notable Publications

Author	Pubmed ID	Journal	Application
Noritoshi Oka	31333790	J Cancer	WB,IHC
Shasha Xu	37127048	Horm Metab Res	WB
Xiaojie Wang	36916294	Cancer Rep (Hoboken)	WB,IHC

## Storage

Storage:

Store at -20°C. Stable for one year after shipment.

Storage Buffer:

PBS with 0.02% sodium azide and 50% glycerol pH 7.3.

Aliquoting is unnecessary for -20°C storage

\*\*\* 20ul sizes contain 0.1% BSA

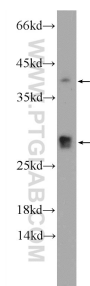
For technical support and original validation data for this product please contact:

T: 1 (888) 4PTGLAB (1-888-478-4522) (toll free in USA), or 1(312) 455-8498 (outside USA)

E: [proteintech@ptglab.com](mailto:proteintech@ptglab.com)  
W: [ptglab.com](http://ptglab.com)

This product is exclusively available under Proteintech Group brand and is not available to purchase from any other manufacturer.

## Selected Validation Data



MCF-7 cells were subjected to SDS PAGE followed by western blot with 16751-1-AP (CENPN Antibody) at dilution of 1:1000 incubated at room temperature for 1.5 hours.