

For Research Use Only

RCC2 Polyclonal antibody

Catalog Number: 16755-1-AP

1 Publications



Basic Information

Catalog Number:

16755-1-AP

Size:

150ul, Concentration: 500 ug/ml by Nanodrop and 267 ug/ml by Bradford method using BSA as the standard;

Source:

Rabbit

Isotype:

IgG

Immunogen Catalog Number:

AG10271

GenBank Accession Number:

BC042141

GeneID (NCBI):

55920

UNIPROT ID:

Q9P258

Full Name:

regulator of chromosome condensation 2

Calculated MW:

522 aa, 56 kDa

Observed MW:

56 kDa

Purification Method:

Antigen affinity purification

Recommended Dilutions:

WB 1:1000-1:4000

IHC 1:250-1:1000

Applications

Tested Applications:

WB, IHC, ELISA

Cited Applications:

WB

Species Specificity:

human, mouse, rat

Cited Species:

human

Positive Controls:

WB : HEK-293T cells, PC-3 cells, HeLa cells, HUVEC cells, MOLT-4 cells, NCI-H1299 cells

IHC : human colon cancer tissue, human ovary tumor tissue, human stomach cancer tissue, mouse testis tissue, rat colon tissue, rat testis tissue

Note-IHC: suggested antigen retrieval with *TE buffer pH 9.0*; (*) Alternatively, antigen retrieval may be performed with *citrate buffer pH 6.0*

Background Information

RCC2 (also known as TD60) is a guanine exchange factor that is active on RalA, a small GTPase. RCC2 and RalA are both essential for proper kinetochore-microtubule function in early mitosis. RCC2 has been shown to be a biomarker for colorectal cancer.

Notable Publications

Author	Pubmed ID	Journal	Application
Nan Zhang	35217832	Exp Mol Med	WB

Storage

Storage:

Store at -20°C. Stable for one year after shipment.

Storage Buffer:

PBS with 0.02% sodium azide and 50% glycerol pH 7.3.

Aliquoting is unnecessary for -20°C storage

*** 20ul sizes contain 0.1% BSA

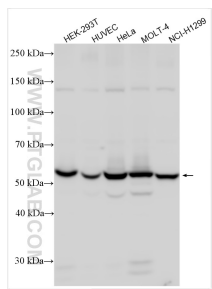
For technical support and original validation data for this product please contact:

T: 1 (888) 4PTGLAB (1-888-478-4522) (toll free in USA), or 1(312) 455-8498 (outside USA)

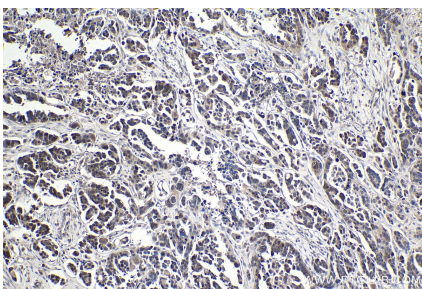
E: proteintech@ptglab.com
W: ptglab.com

This product is exclusively available under Proteintech Group brand and is not available to purchase from any other manufacturer.

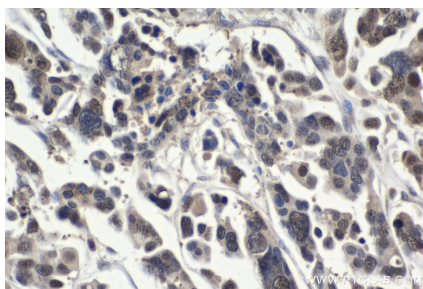
Selected Validation Data



Various lysates were subjected to SDS PAGE followed by western blot with 16755-1-AP (RCC2 antibody) at dilution of 1:2000 incubated at room temperature for 1.5 hours.



Immunohistochemical analysis of paraffin-embedded human colon cancer tissue slide using 16755-1-AP (RCC2 antibody) at dilution of 1:500 (under 10x lens). Heat mediated antigen retrieval with Tris-EDTA buffer (pH 9.0).



Immunohistochemical analysis of paraffin-embedded human colon cancer tissue slide using 16755-1-AP (RCC2 antibody) at dilution of 1:500 (under 40x lens). Heat mediated antigen retrieval with Tris-EDTA buffer (pH 9.0).