

For Research Use Only

# GPT2 Polyclonal antibody

Catalog Number: 16757-1-AP

Featured Product

29 Publications



## Basic Information

<b>Catalog Number:</b> 16757-1-AP	<b>GenBank Accession Number:</b> BC062555	<b>Purification Method:</b> Antigen affinity purification
<b>Size:</b> 150ul , Concentration: 500 µg/ml by Nanodrop;	<b>GeneID (NCBI):</b> 84706	<b>Recommended Dilutions:</b> WB 1:500-1:3000 IP 0.5-4.0 ug for IP and 1:500-1:1000 for WB
<b>Source:</b> Rabbit	<b>Full Name:</b> glutamic pyruvate transaminase (alanine aminotransferase) 2	<b>IHC 1:50-1:500</b> <b>IF 1:200-1:800</b>
<b>Isotype:</b> IgG	<b>Calculated MW:</b> 523 aa, 58 kDa	
<b>Immunogen Catalog Number:</b> AG10273	<b>Observed MW:</b> 58 kDa, 47 kDa	

## Applications

**Tested Applications:**  
FC, IF, IHC, IP, WB, ELISA

**Cited Applications:**  
FC (Intra), IF, IHC, WB

**Species Specificity:**  
human, mouse, rat

**Cited Species:**  
human, mouse

**Positive Controls:**

**WB:** mouse liver tissue, mouse kidney tissue, HepG2 cells

**IP:** mouse kidney tissue,

**IHC:** human skeletal muscle tissue, mouse brain tissue

**IF:** HepG2 cells,

**Note-IHC: suggested antigen retrieval with TE buffer pH 9.0; (\*) Alternatively, antigen retrieval may be performed with citrate buffer pH 6.0**

## Background Information

GPT2 (Alanine aminotransferase 2; ALT2) is a key enzyme in intermediary metabolism, catalysing the reversible transfer of the amino group of glutamate to pyruvate, yielding alanine and ketoglutarate. GPT2 protein localizes to mitochondria, and is mainly expressed in the pancreas, brain, adrenal gland, skeletal muscle and heart. Serum GPT2 is a useful marker for liver damage. Recently mutation of GPT2 has been reported to be a cause of neural disorder (27601654). 16757-1-AP antibody recognizes two different isoforms of GPT2 protein.

## Notable Publications

Author	Pubmed ID	Journal	Application
Qing Ouyang	27601654	Proc Natl Acad Sci U S A	WB,IF
Bo Zhang	35499760	Cancer Res	WB
Xiao Zhang	33897873	Theranostics	WB

## Storage

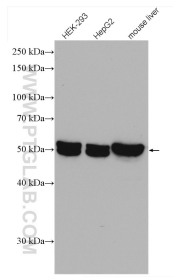
**Storage:**  
Store at -20°C. Stable for one year after shipment.  
**Storage Buffer:**  
PBS with 0.02% sodium azide and 50% glycerol pH 7.3.  
Aliquoting is unnecessary for -20°C storage

\*\*\* 20ul sizes contain 0.1% BSA

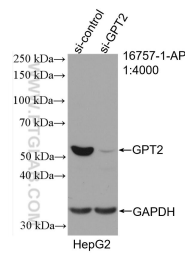
For technical support and original validation data for this product please contact:  
T: 1 (888) 4PTGLAB (1-888-478-4522) (toll free in USA), or 1(312) 455-8498 (outside USA)  
E: proteintech@ptglab.com  
W: ptglab.com

This product is exclusively available under Proteintech Group brand and is not available to purchase from any other manufacturer.

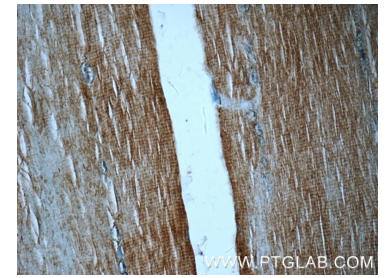
## Selected Validation Data



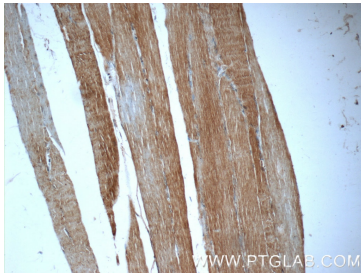
Various lysates were subjected to SDS PAGE followed by western blot with 16757-1-AP (GPT2 antibody) at dilution of 1:1500 incubated at room temperature for 1.5 hours.



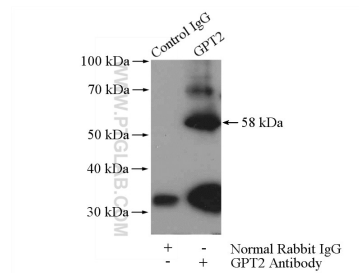
WB result of GPT2 antibody (16757-1-AP; 1:4000; incubated at room temperature for 1.5 hours) with sh-Control and sh-GPT2 transfected HepG2 cells.



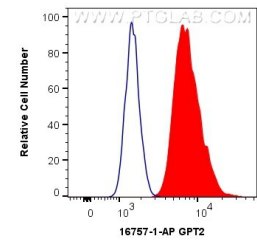
Immunohistochemical analysis of paraffin-embedded human skeletal muscle tissue slide using 16757-1-AP (GPT2 Antibody) at dilution of 1:50 (under 40x lens).



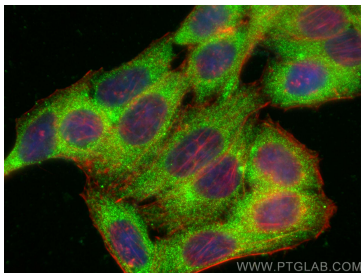
Immunohistochemical analysis of paraffin-embedded human skeletal muscle tissue slide using 16757-1-AP (GPT2 Antibody) at dilution of 1:50 (under 10x lens).



IP Result of anti-GPT2 (IP:16757-1-AP, 4ug; Detection:16757-1-AP 1:500) with mouse kidney tissue lysate 7200ug.



$1 \times 10^6$  HepG2 cells were intracellularly stained with 0.4 ug Anti-Human GPT2 (16757-1-AP) and CoraLite®488-Conjugated AffiniPure Goat Anti-Rabbit IgG(H+L) at dilution 1:1000 (red), or 0.4 ug Isotype Control. Cells were fixed with 4% PFA and permeabilized with Flow Cytometry Perm Buffer (PF00011-C).



Immunofluorescent analysis of (-20°C Ethanol) fixed HepG2 cells using GPT2 antibody (16757-1-AP) at dilution of 1:400 and CoraLite®488-Conjugated AffiniPure Goat Anti-Rabbit IgG(H+L), CL594-phalloidin (red).