

For Research Use Only

IGDCC3 Polyclonal antibody

Catalog Number: 16759-1-AP



Basic Information

Catalog Number:

16759-1-AP

Size:

150ul, Concentration: 550 ug/ml by Nanodrop;

Source:

Rabbit

Isotype:

IgG

Immunogen Catalog Number:

AG10276

GenBank Accession Number:

BC067107

GeneID (NCBI):

9543

UNIPROT ID:

Q8IVU1

Full Name:

immunoglobulin superfamily, DCC subclass, member 3

Calculated MW:

814 aa, 87 kDa

Observed MW:

87 kDa

Purification Method:

Antigen affinity purification

Recommended Dilutions:

IP 0.5-4.0 ug for 1.0-3.0 mg of total protein lysate

Applications

Tested Applications:

IP, ELISA

Species Specificity:

human, mouse, rat

Positive Controls:

IP : human placenta tissue,

Background Information

IGDCC3, also known as PUNC, is a transmembrane protein that belongs to the immunoglobulin (Ig) superfamily (PMID: 9507132). IGDCC3 contains 4 C2-type Ig-like domains and 2 fibronectin type III repeats. It is highly expressed in the developing embryo in nervous system, limbs, and inner ear (PMID: 9922388; 9507132). IGDCC3 may be involved in the cerebellar control of motor coordination (PMID: 11486040). It has also been associated with tumorigenic mechanism and prognosis of cholangiocarcinoma (PMID: 36979826).

Storage

Storage:

Store at -20°C. Stable for one year after shipment.

Storage Buffer:

PBS with 0.02% sodium azide and 50% glycerol pH 7.3.

Aliquoting is unnecessary for -20°C storage

*** 20ul sizes contain 0.1% BSA

For technical support and original validation data for this product please contact:

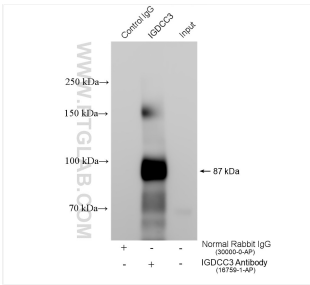
T: 1 (888) 4PTGLAB (1-888-478-4522) (toll free in USA), or 1(312) 455-8498 (outside USA)

E: proteintech@ptglab.com

W: ptglab.com

This product is exclusively available under Proteintech Group brand and is not available to purchase from any other manufacturer.

Selected Validation Data



IP result of anti-IGDCC3 (IP:16759-1-AP, 4ug;
Detection:16759-1-AP 1:300) with human placenta
tissue lysate 1200 ug.