

For Research Use Only

MRPL40 Polyclonal antibody, PBS Only

Catalog Number: 16767-1-PBS



Basic Information

Catalog Number:

16767-1-PBS

Size:

100ug, Concentration: 1 mg/ml by Nanodrop;

Source:

Rabbit

Isotype:

IgG

Immunogen Catalog Number:

AG10341

GenBank Accession Number:

BC009707

GeneID (NCBI):

64976

UNIPROT ID:

Q9NQ50

Full Name:

mitochondrial ribosomal protein L40

Calculated MW:

206 aa, 24 kDa

Observed MW:

18-24 kDa

Purification Method:

Antigen affinity purification

Applications

Tested Applications:

WB, IHC, IF/ICC, IP, Indirect ELISA

Species Specificity:

human

Storage

Storage:

Store at -80°C.

Storage Buffer:

PBS Only

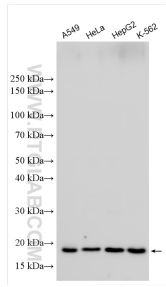
For technical support and original validation data for this product please contact:

T: 1 (888) 4PTGLAB (1-888-478-4522) (toll free in USA), or 1(312) 455-8498 (outside USA)

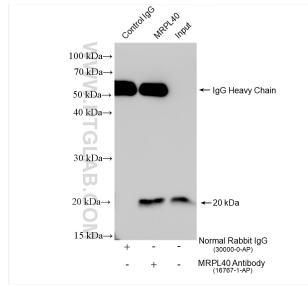
E: proteintech@ptglab.com
W: ptglab.com

This product is exclusively available under Proteintech Group brand and is not available to purchase from any other manufacturer.

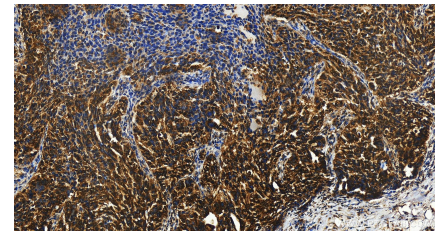
Selected Validation Data



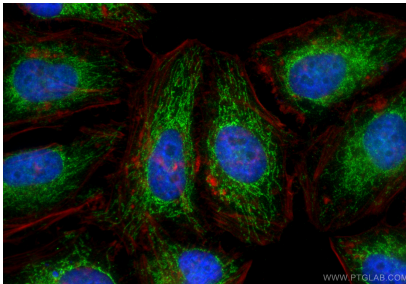
Various lysates were subjected to SDS PAGE followed by western blot with 16767-1-AP (MRPL40 antibody) at dilution of 1:3000 incubated at room temperature for 1.5 hours. This data was developed using the same antibody clone with 16767-1-PBS in a different storage buffer formulation.



IP result of anti-MRPL40 (IP:16767-1-AP, 4ug; Detection:16767-1-AP 1:2000) with HeLa cells lysate 1920 ug. This data was developed using the same antibody clone with 16767-1-PBS in a different storage buffer formulation.



Immunohistochemical analysis of paraffin-embedded human ovary cancer tissue slide using 16767-1-AP (MRPL40 antibody) at dilution of 1:200 (under 20x lens). Heat mediated antigen retrieval with Tris-EDTA buffer (pH 9.0). This data was developed using the same antibody clone with 16767-1-PBS in a different storage buffer formulation.



Immunofluorescent analysis of (4% PFA) fixed HeLa cells using MRPL40 antibody (16767-1-AP) at dilution of 1:500 and CoralLite@488-Conjugated Goat Anti-Rabbit IgG(H+L) (SA00013-2), CL594-phalloidin (red). This data was developed using the same antibody clone with 16767-1-PBS in a different storage buffer formulation.