

For Research Use Only

SCUBE3 Polyclonal antibody

Catalog Number: 16773-1-AP

2 Publications



Basic Information

Catalog Number: 16773-1-AP	GenBank Accession Number: BC052263	Purification Method: Antigen affinity purification
Size: 150ul , Concentration: 240 µg/ml by Nanodrop and 133 µg/ml by Bradford method using BSA as the standard;	GeneID (NCBI): 222663	Recommended Dilutions: WB 1:200-1:1000 IHC 1:20-1:200
Source: Rabbit	UNIPROT ID: Q8IX30	
Isotype: IgG	Full Name: signal peptide, CUB domain, EGF-like 3	
Immunogen Catalog Number: AG10085	Calculated MW: 992 aa, 109 kDa	
	Observed MW: 130 kDa	

Applications

Tested Applications: WB, IHC, ELISA	Positive Controls:
Cited Applications: WB, IHC	WB : mouse kidney tissue, mouse lung tissue
Species Specificity: human, mouse, rat	IHC : human kidney tissue,
Cited Species: human, mouse	
Note-IHC: suggested antigen retrieval with TE buffer pH 9.0; (*) Alternatively, antigen retrieval may be performed with citrate buffer pH 6.0	

Background Information

SCUBE3 is a secreted glycoprotein that belongs to the SCUBE family. Members of the SCUBE family are secreted plasma membrane-associated proteins characterised by a N-terminal signal peptide sequence, multiple EGF domains, a N-linked glycosylated spacer region and a C-terminal CUB region. SCUBE3 may play a role in bone cell biology (PMID: 15234972). It may also has a role in the regulation of cardiac growth and remodeling responses (PMID: 17442284). Besides, SCUBE3 has been reported to be involved in lung cancer progression (PMID: 21441952; 23420440).

Notable Publications

Author	Pubmed ID	Journal	Application
Nannan Han	30098429	Gene	IHC
Jing Shen	38109990	Mol Cell Endocrinol	WB

Storage

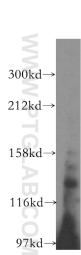
Storage:
Store at -20°C. Stable for one year after shipment.
Storage Buffer:
PBS with 0.02% sodium azide and 50% glycerol pH 7.3.
Aliquoting is unnecessary for -20°C storage

*** 20ul sizes contain 0.1% BSA

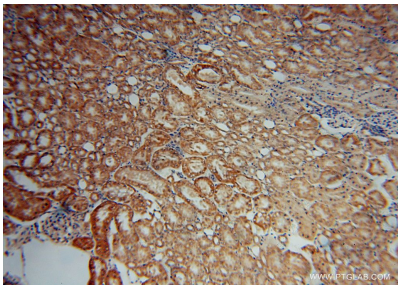
For technical support and original validation data for this product please contact:
T: 1 (888) 4PTGLAB (1-888-478-4522) (toll free in USA), or 1(312) 455-8498 (outside USA)
E: proteintech@ptglab.com
W: ptglab.com

This product is exclusively available under Proteintech Group brand and is not available to purchase from any other manufacturer.

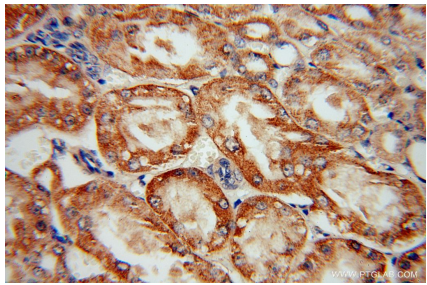
Selected Validation Data



mouse kidney tissue were subjected to SDS PAGE followed by western blot with 16773-1-AP (SCUBE3 antibody) at dilution of 1:300 incubated at room temperature for 1.5 hours.



Immunohistochemical analysis of paraffin-embedded human kidney using 16773-1-AP (SCUBE3 antibody) at dilution of 1:50 (under 10x lens).



Immunohistochemical analysis of paraffin-embedded human kidney using 16773-1-AP (SCUBE3 antibody) at dilution of 1:50 (under 40x lens).