

For Research Use Only

SCUBE3 Polyclonal antibody, PBS Only

Catalog Number: 16773-1-PBS

Featured Product



Basic Information

Catalog Number:

16773-1-PBS

Size:

100ug, Concentration: 1 mg/ml by Nanodrop;

Source:

Rabbit

Isotype:

IgG

Immunogen Catalog Number:

AG10085

GenBank Accession Number:

BC052263

GeneID (NCBI):

222663

UNIPROT ID:

Q8IX30

Full Name:

signal peptide, CUB domain, EGF-like 3

Calculated MW:

992 aa, 109 kDa

Observed MW:

130 kDa

Purification Method:

Antigen affinity purification

Applications

Tested Applications:

WB, IHC, Indirect ELISA

Species Specificity:

human, mouse, rat

Background Information

SCUBE3 is a secreted glycoprotein that belongs to the SCUBE family. Members of the SCUBE family are secreted plasma membrane-associated proteins characterised by a N-terminal signal peptide sequence, multiple EGF domains, a N-linked glycosylated spacer region and a C-terminal CUB region. SCUBE3 may play a role in bone cell biology (PMID: 15234972). It may also have a role in the regulation of cardiac growth and remodeling responses (PMID: 17442284). Besides, SCUBE3 has been reported to be involved in lung cancer progression (PMID: 21441952; 23420440).

Storage

Storage:

Store at -80°C.

Storage Buffer:

PBS only, pH7.3

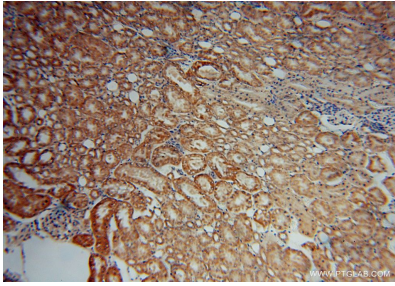
For technical support and original validation data for this product please contact:

T: 1 (888) 4PTGLAB (1-888-478-4522) (toll free in USA), or 1(312) 455-8498 (outside USA)

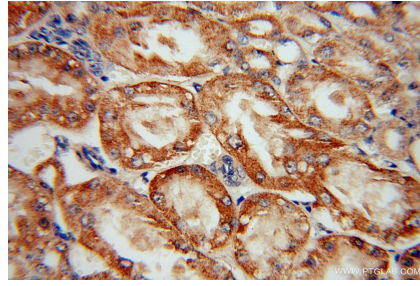
E: proteintech@ptglab.com
W: ptglab.com

This product is exclusively available under Proteintech Group brand and is not available to purchase from any other manufacturer.

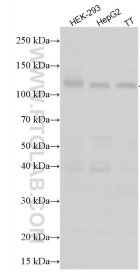
Selected Validation Data



Immunohistochemical analysis of paraffin-embedded human kidney using 16773-1-AP (SCUBE3 antibody) at dilution of 1:50 (under 10x lens). This data was developed using the same antibody clone with 16773-1-PBS in a different storage buffer formulation.



Immunohistochemical analysis of paraffin-embedded human kidney using 16773-1-AP (SCUBE3 antibody) at dilution of 1:50 (under 40x lens). This data was developed using the same antibody clone with 16773-1-PBS in a different storage buffer formulation.



Various lysates were subjected to SDS PAGE followed by western blot with 16773-1-AP (SCUBE3 antibody) at dilution of 1:400 incubated at room temperature for 1.5 hours. This data was developed using the same antibody clone with 16773-1-PBS in a different storage buffer formulation.