

For Research Use Only

RAB11FIP1 Polyclonal antibody

Catalog Number: 16778-1-AP

5 Publications



Basic Information

Catalog Number:

16778-1-AP

Size:

150ul, Concentration: 200 ug/ml by Nanodrop and 133 ug/ml by Bradford method using BSA as the standard;

Source:

Rabbit

Isotype:

IgG

Immunogen Catalog Number:

AG10179

GenBank Accession Number:

BC077720

GeneID (NCBI):

80223

UNIPROT ID:

Q6WKZ4

Full Name:

RAB11 family interacting protein 1 (class I)

Calculated MW:

649aa, 71 kDa; 1283aa, 137 kDa

Observed MW:

71 kDa

Purification Method:

Antigen affinity purification

Recommended Dilutions:

WB 1:500-1:1000

IP 0.5-4.0 ug for 1.0-3.0 mg of total protein lysate

IHC 1:20-1:200

Applications

Tested Applications:

WB, IHC, IP, ELISA

Cited Applications:

WB, IHC, IF, RIP

Species Specificity:

human, mouse, rat, monkey

Cited Species:

human, mouse, rat

Note-IHC: suggested antigen retrieval with TE buffer pH 9.0; (*) Alternatively, antigen retrieval may be performed with citrate buffer pH 6.0

Positive Controls:

WB: HepG2 cells, COS-7 cells, SKOV-3 cells

IP: HepG2 cells,

IHC: human breast cancer tissue,

Notable Publications

Author	Pubmed ID	Journal	Application
Chi Hin Wong	32217695	Cancer Res	RIP
Chi Hin Wong	34983537	Mol Cancer	WB, RIP
Li Guo	33855356	Brief Bioinform	WB

Storage

Storage:

Store at -20°C. Stable for one year after shipment.

Storage Buffer:

PBS with 0.02% sodium azide and 50% glycerol pH 7.3.

Aliquoting is unnecessary for -20°C storage

*** 20ul sizes contain 0.1% BSA

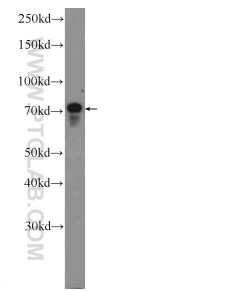
For technical support and original validation data for this product please contact:

T: 1 (888) 4PTGLAB (1-888-478-4522) (toll free in USA), or 1(312) 455-8498 (outside USA)

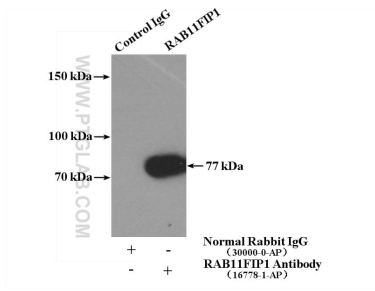
E: proteintech@ptglab.com
W: ptglab.com

This product is exclusively available under Proteintech Group brand and is not available to purchase from any other manufacturer.

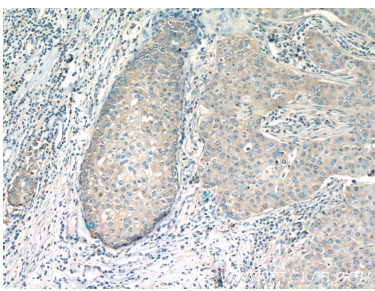
Selected Validation Data



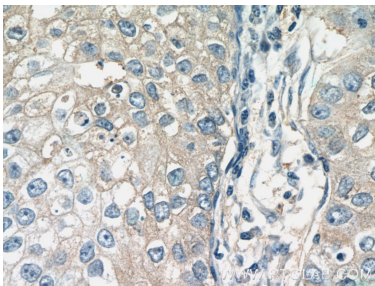
HepG2 cells were subjected to SDS PAGE followed by western blot with 16778-1-AP (RAB11FIP1 Antibody) at dilution of 1:600 incubated at room temperature for 1.5 hours.



IP result of anti-RAB11FIP1 (IP:16778-1-AP, 4ug; Detection:16778-1-AP 1:600) with HepG2 cells lysate 3200ug.



Immunohistochemical analysis of paraffin-embedded human breast cancer tissue slide using 16778-1-AP (RAB11FIP1 Antibody) at dilution of 1:50 (under 10x lens).



Immunohistochemical analysis of paraffin-embedded human breast cancer tissue slide using 16778-1-AP (RAB11FIP1 Antibody) at dilution of 1:50 (under 40x lens).