

For Research Use Only

DcR2 Polyclonal antibody

Catalog Number: 16781-1-AP

3 Publications



Basic Information

Catalog Number:

16781-1-AP

Size:

150ul, Concentration: 1000 ug/ml by Nanodrop and 513 ug/ml by Bradford method using BSA as the standard;

Source:

Rabbit

Isotype:

IgG

Immunogen Catalog Number:

AG10208

GenBank Accession Number:

BC052270

GeneID (NCBI):

8793

UNIPROT ID:

Q9UBN6

Full Name:

tumor necrosis factor receptor superfamily, member 10d, decoy with truncated death domain

Calculated MW:

386 aa, 42 kDa

Observed MW:

50-55 kDa

Purification Method:

Antigen affinity purification

Recommended Dilutions:

WB 1:1000-1:4000

IHC 1:20-1:200

Applications

Tested Applications:

WB, IHC, ELISA

Cited Applications:

WB, IHC

Species Specificity:

human

Cited Species:

human

Note-IHC: suggested antigen retrieval with TE buffer pH 9.0; (*) Alternatively, antigen retrieval may be performed with citrate buffer pH 6.0

Positive Controls:

WB : A549 cells, DU 145 cells, HeLa cells

IHC : human kidney tissue,

Notable Publications

Author	Pubmed ID	Journal	Application
Fu K K	21785459	Oncogene	WB
Yingxi Xu	26257076	Sci Rep	WB, IHC
Jiamei Han	36747580	Mater Today Bio	WB

Storage

Storage:

Store at -20°C. Stable for one year after shipment.

Storage Buffer:

PBS with 0.02% sodium azide and 50% glycerol pH 7.3.

Aliquoting is unnecessary for -20°C storage

*** 20ul sizes contain 0.1% BSA

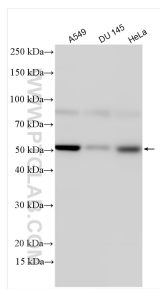
For technical support and original validation data for this product please contact:

T: 1 (888) 4PTGLAB (1-888-478-4522) (toll free in USA), or 1(312) 455-8498 (outside USA)

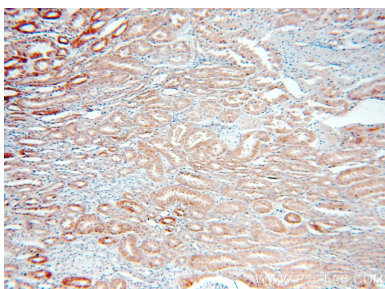
E: proteintech@ptglab.com
W: ptglab.com

This product is exclusively available under Proteintech Group brand and is not available to purchase from any other manufacturer.

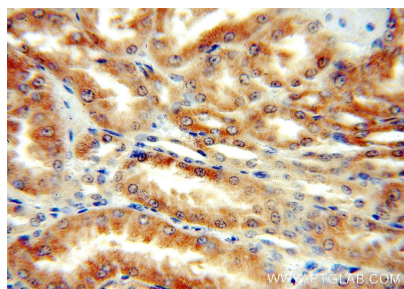
Selected Validation Data



Various lysates were subjected to SDS PAGE followed by western blot with 16781-1-AP (DcR2 antibody) at dilution of 1:2000 incubated at room temperature for 1.5 hours.



Immunohistochemical analysis of paraffin-embedded human kidney using 16781-1-AP (DcR2 antibody) at dilution of 1:50 (under 10x lens).



Immunohistochemical analysis of paraffin-embedded human kidney using 16781-1-AP (DcR2 antibody) at dilution of 1:50 (under 40x lens).