

For Research Use Only

DcR2 Polyclonal antibody, PBS Only

Catalog Number:16781-1-PBS



Basic Information

Catalog Number:

16781-1-PBS

Size:

100ug, Concentration: 1 mg/ml by Nanodrop;

Source:

Rabbit

Isotype:

IgG

Immunogen Catalog Number:

AG10208

GenBank Accession Number:

BC052270

GeneID (NCBI):

8793

UNIPROT ID:

Q9UBN6

Full Name:

tumor necrosis factor receptor superfamily, member 10d, decoy with truncated death domain

Calculated MW:

386 aa, 42 kDa

Observed MW:

50-55 kDa

Purification Method:

Antigen affinity purification

Applications

Tested Applications:

WB, IHC, Indirect ELISA

Species Specificity:

human

Background Information

Decoy receptor 2 (DcR2) is a member of the tumor necrosis factor receptor (TNFR) superfamily. It functions as a decoy receptor for TNF-related apoptosis-inducing ligand (TRAIL), thereby inhibiting TRAIL-mediated apoptosis (PMID: 15538968; 9537512). It has been considered a tentative marker of cellular senescence (PMID: 16079833; 22751116). Additionally, DCR2 has been implicated in the regulation of renal fibrosis and cell senescence, contributing to the pathogenesis of diabetic nephropathy (PMID: 35661704).

Storage

Storage:

Store at -80°C.

Storage Buffer:

PBS only, pH7.3

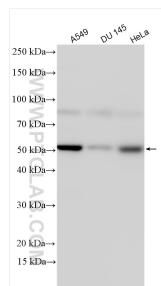
For technical support and original validation data for this product please contact:

T: 1 (888) 4PTGLAB (1-888-478-4522) (toll free in USA), or 1(312) 455-8498 (outside USA)

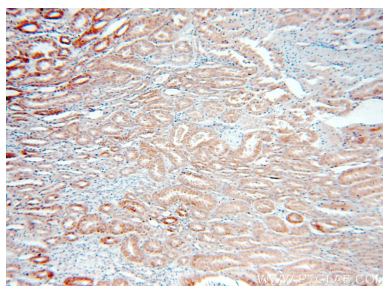
E: proteintech@ptglab.com
W: ptglab.com

This product is exclusively available under Proteintech Group brand and is not available to purchase from any other manufacturer.

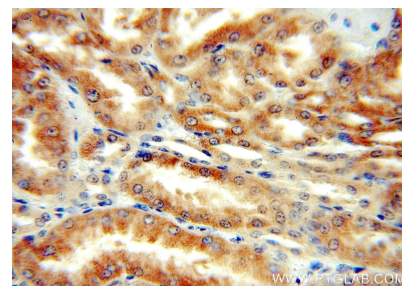
Selected Validation Data



Various lysates were subjected to SDS PAGE followed by western blot with 16781-1-AP (DcR2 antibody) at dilution of 1:2000 incubated at room temperature for 1.5 hours. This data was developed using the same antibody clone with 16781-1-PBS in a different storage buffer formulation.



Immunohistochemical analysis of paraffin-embedded human kidney using 16781-1-AP (DcR2 antibody) at dilution of 1:50 (under 10x lens). This data was developed using the same antibody clone with 16781-1-PBS in a different storage buffer formulation.



Immunohistochemical analysis of paraffin-embedded human kidney using 16781-1-AP (DcR2 antibody) at dilution of 1:50 (under 40x lens). This data was developed using the same antibody clone with 16781-1-PBS in a different storage buffer formulation.