

For Research Use Only

# LACTB2 Polyclonal antibody

Catalog Number: 16783-1-AP

Featured Product



## Basic Information

**Catalog Number:**  
16783-1-AP

**Size:**  
150ul, Concentration: 600 µg/ml by Nanodrop and 293 µg/ml by Bradford method using BSA as the standard;

**Source:**  
Rabbit

**Isotype:**  
IgG

**Immunogen Catalog Number:**  
AG10213

**GenBank Accession Number:**  
BC000878

**GeneID (NCBI):**  
51110

**Full Name:**  
lactamase, beta 2

**Calculated MW:**  
288 aa, 33 kDa

**Observed MW:**  
33 kDa

**Purification Method:**  
Antigen affinity purification

**Recommended Dilutions:**  
WB 1:1000-1:8000  
IP 0.5-4.0 µg for IP and 1:500-1:1000 for WB  
IHC 1:20-1:200  
IF 1:10-1:100

## Applications

**Tested Applications:**  
IF, IHC, IP, WB, ELISA

**Species Specificity:**  
human, mouse, rat

**Note-IHC: suggested antigen retrieval with TE buffer pH 9.0; (\*) Alternatively, antigen retrieval may be performed with citrate buffer pH 6.0**

**Positive Controls:**

**WB:** MCF-7 cells, PC-3 cells, Y79 cells, A549 cells, HeLa cells

**IP:** A549 cells,

**IHC:** human cervix tissue,

**IF:** HepG2 cells,

## Background Information

### Storage

**Storage:**

Store at -20°C. Stable for one year after shipment.

**Storage Buffer:**

PBS with 0.02% sodium azide and 50% glycerol pH 7.3.

Aliquoting is unnecessary for -20°C storage

\*\*\* 20ul sizes contain 0.1% BSA

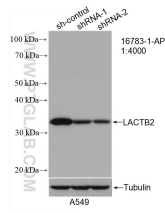
For technical support and original validation data for this product please contact:

T: 1 (888) 4PTGLAB (1-888-478-4522) (toll free in USA), or 1(312) 455-8498 (outside USA)

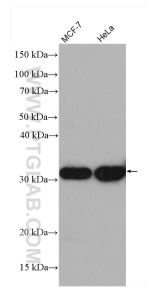
E: [proteintech@ptglab.com](mailto:proteintech@ptglab.com)  
W: [ptglab.com](http://ptglab.com)

This product is exclusively available under Proteintech Group brand and is not available to purchase from any other manufacturer.

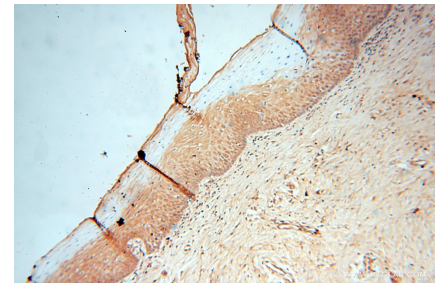
## Selected Validation Data



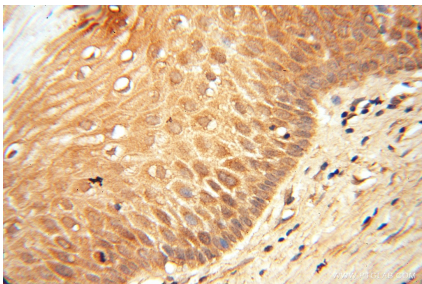
WB result of LACTB2 antibody (16783-1-AP; 1:4000; incubated at room temperature for 1.5 hours) with sh-Control and sh-LACTB2 transfected A549 cells.



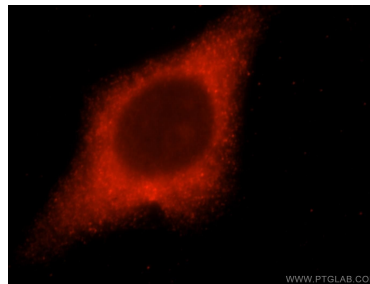
Various lysates were subjected to SDS PAGE followed by western blot with 16783-1-AP (LACTB2 antibody) at dilution of 1:4000 incubated at room temperature for 1.5 hours.



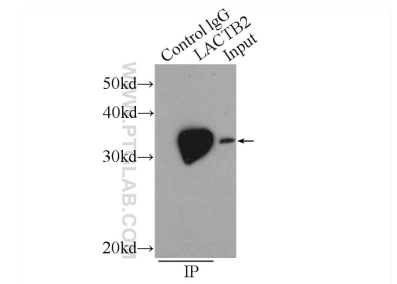
Immunohistochemical analysis of paraffin-embedded human cervix using 16783-1-AP (LACTB2 antibody) at dilution of 1:100 (under 10x lens).



Immunohistochemical analysis of paraffin-embedded human cervix using 16783-1-AP (LACTB2 antibody) at dilution of 1:100 (under 40x lens).



Immunofluorescent analysis of HepG2 cells, using LACTB2 antibody 16783-1-AP at 1:25 dilution and Rhodamine-labeled goat anti-rabbit IgG (red).



IP Result of anti-LACTB2 (IP:16783-1-AP, 3ug; Detection:16783-1-AP 1:700) with A549 cells lysate 520ug.