

For Research Use Only

# MED30 Polyclonal antibody

Catalog Number: 16787-1-AP

Featured Product

4 Publications



## Basic Information

**Catalog Number:**  
16787-1-AP

**Size:**  
150ul, Concentration: 240 µg/ml by Nanodrop and 133 µg/ml by Bradford method using BSA as the standard;

**Source:**  
Rabbit

**Isotype:**  
IgG

**Immunogen Catalog Number:**  
AG10221

**GenBank Accession Number:**  
BC008226

**GeneID (NCBI):**  
90390

**Full Name:**  
mediator complex subunit 30

**Calculated MW:**  
178 aa, 20 kDa

**Observed MW:**  
20-25 kDa

**Purification Method:**  
Antigen affinity purification

**Recommended Dilutions:**  
WB 1:500-1:1000  
IP 0.5-4.0 µg for IP and 1:500-1:1000 for WB

## Applications

**Tested Applications:**  
IP, WB, ELISA

**Cited Applications:**  
IHC, WB

**Species Specificity:**  
human, mouse

**Cited Species:**  
human

**Positive Controls:**

**WB:** human heart tissue,

**IP:** mouse heart tissue,

## Background Information

MED30, also named as THRAP6 and TRAP25, is a component of the Mediator complex. MED30 has two isoforms with MW 16-20 kDa and 20-25 kDa.

## Notable Publications

Author	Pubmed ID	Journal	Application
Yuki Jimbayashi Kutsuna	36436353	J Autoimmun	IHC
Yong Joo Lee	26110885	PLoS One	WB, IHC
Isabella Syring	29661722	Ann Diagn Pathol	WB, IHC

## Storage

**Storage:**

Store at -20°C. Stable for one year after shipment.

**Storage Buffer:**

PBS with 0.02% sodium azide and 50% glycerol pH 7.3.

Aliquoting is unnecessary for -20°C storage

\*\*\* 20ul sizes contain 0.1% BSA

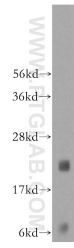
For technical support and original validation data for this product please contact:

T: 1 (888) 4PTGLAB (1-888-478-4522) (toll free in USA), or 1(312) 455-8498 (outside USA)

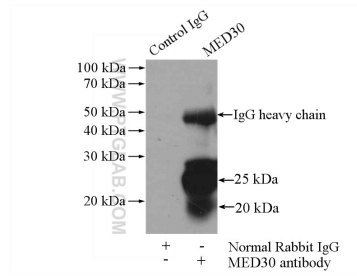
E: proteintech@ptglab.com  
W: ptglab.com

This product is exclusively available under Proteintech Group brand and is not available to purchase from any other manufacturer.

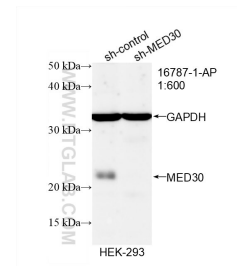
## Selected Validation Data



human heart tissue were subjected to SDS PAGE followed by western blot with 16787-1-AP (MED30 antibody) at dilution of 1:200 incubated at room temperature for 1.5 hours.



IP Result of anti-MED30 (IP:16787-1-AP, 4ug; Detection:16787-1-AP 1:500) with mouse heart tissue lysate 4000ug.



WB result of MED30 antibody (16787-1-AP; 1:600; incubated at room temperature for 1.5 hours) with sh-Control and sh-MED30 transfected HEK-293 cells.