

For Research Use Only

HLA-DRB3 Polyclonal antibody

Catalog Number: 16789-1-AP



Basic Information

Catalog Number: 16789-1-AP	GenBank Accession Number: BC008987	Purification Method: Antigen affinity purification
Size: 150ul , Concentration: 400 ug/ml by Nanodrop;	GeneID (NCBI): 3125	Recommended Dilutions: WB 1:5000-1:50000 IF/ICC 1:200-1:800
Source: Rabbit	UNIPROT ID: P79483	
Isotype: IgG	Full Name: major histocompatibility complex, class II, DR beta 3	
Immunogen Catalog Number: AG10223	Calculated MW: 266 aa, 30 kDa	
	Observed MW: 28-30 kDa	

Applications

Tested Applications: WB, IF/ICC, ELISA	Positive Controls:
Species Specificity: human	WB : Daudi cells, Raji cells, Ramos cells IF/ICC : Raji cells,

Background Information

Human major histocompatibility complex (MHC) antigens, also referred to as human leukocyte antigens (HLA), are encoded by genes located on the short arm of chromosome 6 (6p21.3). There are two classes of HLA antigens: class I (HLA-A, B and C) and class II (HLA-D). The class II molecules are heterodimers consisting of an alpha (DRA) and a beta (DRB) chain. HLA-DRB3 is a beta chain of MHC class II molecule expressed on the surface of antigen presenting cells (APC) like B cells, macrophages, and dendritic cells (PMID: 30192820). It is involved in adaptive immune responses by presenting peptide antigens to CD4+ T cells (PMID: 19830726).

Storage

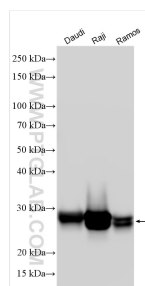
Storage:
Store at -20°C. Stable for one year after shipment.
Storage Buffer:
PBS with 0.02% sodium azide and 50% glycerol pH 7.3.
Aliquoting is unnecessary for -20°C storage

*** 20ul sizes contain 0.1% BSA

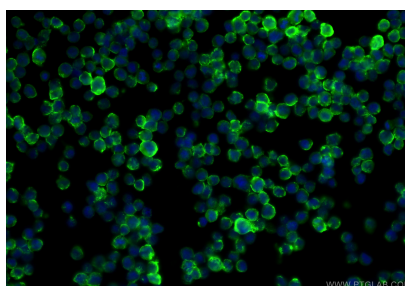
For technical support and original validation data for this product please contact:
T: 1 (888) 4PTGLAB (1-888-478-4522) (toll free in USA), or 1(312) 455-8498 (outside USA)
E: proteintech@ptglab.com
W: ptglab.com

This product is exclusively available under Proteintech Group brand and is not available to purchase from any other manufacturer.

Selected Validation Data



Various lysates were subjected to SDS PAGE followed by western blot with 16789-1-AP (HLA-DRB3 antibody) at dilution of 1:10000 incubated at room temperature for 1.5 hours.



Immunofluorescent analysis of (4% PFA) fixed Raji cells using HLA-DRB3 antibody (16789-1-AP) at dilution of 1:400 and CoraLite®488-Conjugated Goat Anti-Rabbit IgG(H+L) (SA00013-2).