

For Research Use Only

# METTL5 Polyclonal antibody

Catalog Number: 16791-1-AP

Featured Product

16 Publications



## Basic Information

### Catalog Number:

16791-1-AP

### Size:

150ul, Concentration: 750 ug/ml by Nanodrop;

### Source:

Rabbit

### Isotype:

IgG

### Immunogen Catalog Number:

AG10232

### GenBank Accession Number:

BC000921

### GeneID (NCBI):

29081

### UNIPROT ID:

Q9NRN9

### Full Name:

methyltransferase like 5

### Calculated MW:

209 aa, 24 kDa

### Observed MW:

24-27 kDa

### Purification Method:

Antigen affinity purification

### Recommended Dilutions:

WB 1:2000-1:12000

IP 0.5-4.0 ug for 1.0-3.0 mg of total protein lysate

IHC 1:20-1:200

IF/ICC 1:200-1:800

## Applications

### Tested Applications:

WB, IHC, IF/ICC, IP, ELISA

### Cited Applications:

WB, IHC, RIP

### Species Specificity:

human

### Cited Species:

human

### Positive Controls:

WB : HEK-293 cells, HeLa cells, K-562 cells, PC-3 cells

IP : PC-3 cells,

IHC : human brain tissue,

IF/ICC : HepG2 cells,

**Note-IHC: suggested antigen retrieval with TE buffer pH 9.0; (\*) Alternatively, antigen retrieval may be performed with citrate buffer pH 6.0**

## Background Information

METTL5 is a member of the METTL family of S-adenosyl-methionine-dependent methyltransferases that adds m6A to a specific site, nucleotide A-1832 of 18S rRNA, hereafter referred to as m6A1832. METTL5 is localized in the nucleolus and cytoplasm.

## Notable Publications

Author	Pubmed ID	Journal	Application
Jian Zhang	36465115	iScience	WB
Caraline Sepich-Poore	35033535	J Biol Chem	WB
Yanchuang Han	35295259	Front Cardiovasc Med	WB

## Storage

### Storage:

Store at -20°C. Stable for one year after shipment.

### Storage Buffer:

PBS with 0.02% sodium azide and 50% glycerol pH 7.3.

Aliquoting is unnecessary for -20°C storage

\*\*\* 20ul sizes contain 0.1% BSA

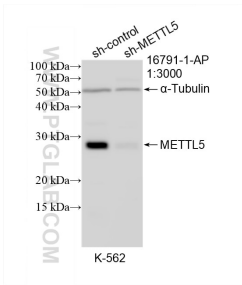
For technical support and original validation data for this product please contact:

T: 1 (888) 4PTGLAB (1-888-478-4522) (toll free in USA), or 1(312) 455-8498 (outside USA)

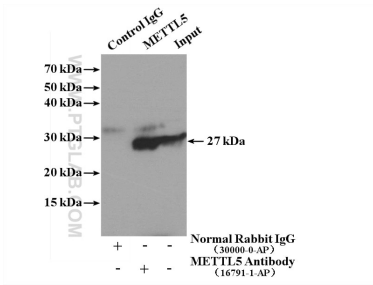
E: [proteintech@ptglab.com](mailto:proteintech@ptglab.com)  
W: [ptglab.com](http://ptglab.com)

This product is exclusively available under Proteintech Group brand and is not available to purchase from any other manufacturer.

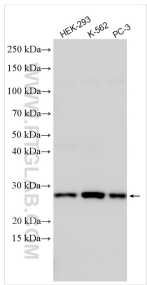
Selected Validation Data



WB result of METTL5 antibody (16791-1-AP; 1:3000; incubated at room temperature for 1.5 hours) with sh-Control and sh-METTL5 transfected K-562 cells.



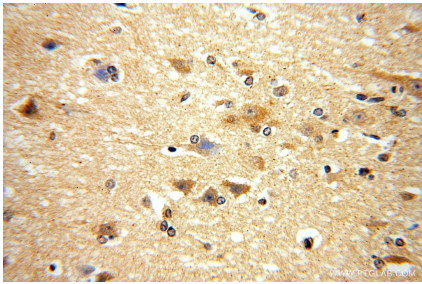
IP result of anti-METTL5 (IP:16791-1-AP, 4ug; Detection:16791-1-AP 1:500) with PC-3 cells lysate 3840 ug.



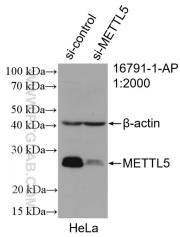
Various lysates were subjected to SDS PAGE followed by western blot with 16791-1-AP (METTL5 antibody) at dilution of 1:6000 incubated at room temperature for 1.5 hours.



Immunohistochemical analysis of paraffin-embedded human brain using 16791-1-AP (METTL5 antibody) at dilution of 1:100 (under 10x lens).



Immunohistochemical analysis of paraffin-embedded human brain using 16791-1-AP (METTL5 antibody) at dilution of 1:100 (under 40x lens).



WB result of METTL5 antibody (16791-1-AP; 1:1000; incubated at room temperature for 1.5 hours) with sh-Control and sh-METTL5 transfected HeLa cells.



Immunofluorescent analysis of (-20°C Ethanol) fixed HepG2 cells using METTL5 antibody (16791-1-AP) at dilution of 1:400 and CoraLite®488-Conjugated Goat Anti-Rabbit IgG(H+L), CL594-phalloidin (red).