

For Research Use Only

PLCD3 Polyclonal antibody

Catalog Number: 16792-1-AP

2 Publications



Basic Information

Catalog Number:

16792-1-AP

Size:

150ul, Concentration: 200 ug/ml by Nanodrop and 147 ug/ml by Bradford method using BSA as the standard;

Source:

Rabbit

Isotype:

IgG

Immunogen Catalog Number:

AG10249

GenBank Accession Number:

BC072384

GeneID (NCBI):

113026

UNIPROT ID:

Q8N3E9

Full Name:

phospholipase C, delta 3

Calculated MW:

789 aa, 89 kDa

Observed MW:

85 kDa

Purification Method:

Antigen affinity purification

Recommended Dilutions:

WB 1:500-1:1000

IHC 1:50-1:500

Applications

Tested Applications:

WB, IHC, ELISA

Cited Applications:

WB

Species Specificity:

human

Cited Species:

human, pig

Note-IHC: suggested antigen retrieval with TE buffer pH 9.0; (*) Alternatively, antigen retrieval may be performed with citrate buffer pH 6.0

Positive Controls:

WB : SH-SY5Y cells, A549 cells, U2OS cells

IHC : human intrahepatic cholangiocarcinoma tissue,

Background Information

Phospholipase C Delta 3 (PLCD3) is a protein-coding gene located on chromosome 17 and a member of the phospholipase C family. PLCD3 is expressed broadly across different tissues, with high expression levels observed in the colon and urinary bladder, among others. The enzyme localizes to the plasma membrane and requires calcium for activation. Spermine, sphingosine, and several phospholipids can inhibit its activity. Recent studies have implicated PLCD3 in various types of cancer. In summary, PLCD3 is an important enzyme involved in cellular signaling and has been implicated in the development and progression of various cancers, making it a potential target for therapeutic interventions.

Notable Publications

Author	Pubmed ID	Journal	Application
Weidong Liu	29115528	Oncol Rep	WB
Hua Li Chen	31898356	J Cell Biochem	WB

Storage

Storage:

Store at -20°C. Stable for one year after shipment.

Storage Buffer:

PBS with 0.02% sodium azide and 50% glycerol pH 7.3.

Aliquoting is unnecessary for -20°C storage

*** 20ul sizes contain 0.1% BSA

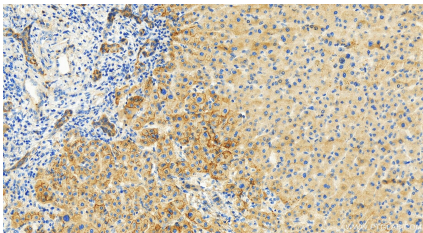
For technical support and original validation data for this product please contact:

T: 1 (888) 4PTGLAB (1-888-478-4522) (toll free in USA), or 1(312) 455-8498 (outside USA)

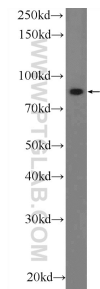
E: proteintech@ptglab.com
W: ptglab.com

This product is exclusively available under Proteintech Group brand and is not available to purchase from any other manufacturer.

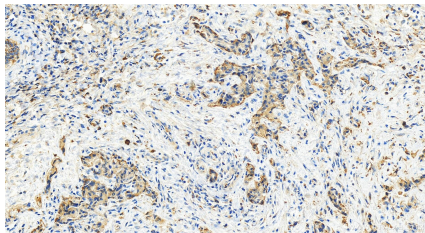
Selected Validation Data



Immunohistochemical analysis of paraffin-embedded human intrahepatic cholangiocarcinoma tissue slide using 16792-1-AP (PLCD3 antibody) at dilution of 1:200 (under 20x lens). Heat mediated antigen retrieval with Tris-EDTA buffer (pH 9.0).



SH-SY5Y cells were subjected to SDS PAGE followed by western blot with 16792-1-AP (PLCD3 Antibody) at dilution of 1:600 incubated at room temperature for 1.5 hours.



Immunohistochemical analysis of paraffin-embedded human intrahepatic cholangiocarcinoma tissue slide using 16792-1-AP (PLCD3 antibody) at dilution of 1:200 (under 20x lens). Heat mediated antigen retrieval with Tris-EDTA buffer (pH 9.0).