

For Research Use Only

# PLCD3 Polyclonal antibody, PBS Only

Catalog Number: 16792-1-PBS



## Basic Information

Catalog Number:

16792-1-PBS

Size:

100ug, Concentration: 1 mg/ml by Nanodrop;

Source:

Rabbit

Isotype:

IgG

Immunogen Catalog Number:

AG10249

GenBank Accession Number:

BC072384

GeneID (NCBI):

113026

UNIPROT ID:

Q8N3E9

Full Name:

phospholipase C, delta 3

Calculated MW:

789 aa, 89 kDa

Observed MW:

85 kDa

Purification Method:

Antigen affinity purification

## Applications

Tested Applications:

WB, IHC, Indirect ELISA

Species Specificity:

human

## Background Information

Phospholipase C Delta 3 (PLCD3) is a protein-coding gene located on chromosome 17 and a member of the phospholipase C family. PLCD3 is expressed broadly across different tissues, with high expression levels observed in the colon and urinary bladder, among others. The enzyme localizes to the plasma membrane and requires calcium for activation. Spermine, sphingosine, and several phospholipids can inhibit its activity. Recent studies have implicated PLCD3 in various types of cancer. In summary, PLCD3 is an important enzyme involved in cellular signaling and has been implicated in the development and progression of various cancers, making it a potential target for therapeutic interventions.

## Storage

Storage:

Store at -80°C.

Storage Buffer:

PBS Only

For technical support and original validation data for this product please contact:

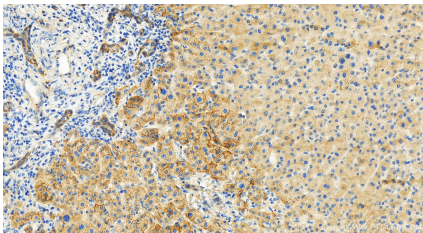
T: 1 (888) 4PTGLAB (1-888-478-4522) (toll free in USA), or 1(312) 455-8498 (outside USA)

E: [proteintech@ptglab.com](mailto:proteintech@ptglab.com)

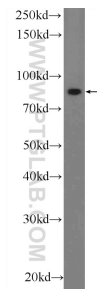
W: [ptglab.com](http://ptglab.com)

This product is exclusively available under Proteintech Group brand and is not available to purchase from any other manufacturer.

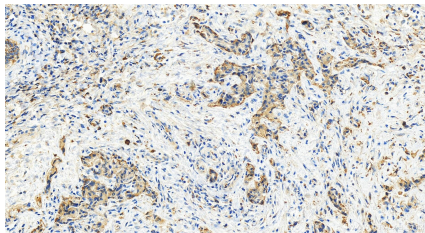
## Selected Validation Data



Immunohistochemical analysis of paraffin-embedded human intrahepatic cholangiocarcinoma tissue slide using 16792-1-AP (PLCD3 antibody) at dilution of 1:200 (under 20x lens). Heat mediated antigen retrieval with Tris-EDTA buffer (pH 9.0). This data was developed using the same antibody clone with 16792-1-PBS in a different storage buffer formulation.



SH-SY5Y cells were subjected to SDS PAGE followed by western blot with 16792-1-AP (PLCD3 Antibody) at dilution of 1:600 incubated at room temperature for 1.5 hours. This data was developed using the same antibody clone with 16792-1-PBS in a different storage buffer formulation.



Immunohistochemical analysis of paraffin-embedded human intrahepatic cholangiocarcinoma tissue slide using 16792-1-AP (PLCD3 antibody) at dilution of 1:200 (under 20x lens). Heat mediated antigen retrieval with Tris-EDTA buffer (pH 9.0). This data was developed using the same antibody clone with 16792-1-PBS in a different storage buffer formulation.