

For Research Use Only

LITAF Polyclonal antibody

Catalog Number: 16797-1-AP

Featured Product

2 Publications



Basic Information

Catalog Number:

16797-1-AP

Size:

150ul, Concentration: 500 ug/ml by Nanodrop and 167 ug/ml by Bradford method using BSA as the standard;

Source:

Rabbit

Isotype:

IgG

Immunogen Catalog Number:

AG10269

GenBank Accession Number:

BC008309

GeneID (NCBI):

9516

UNIPROT ID:

Q99732

Full Name:

lipopolysaccharide-induced TNF factor

Calculated MW:

161 aa, 17 kDa

Observed MW:

24 kDa

Purification Method:

Antigen affinity purification

Recommended Dilutions:

WB 1:500-1:3000

IP 0.5-4.0 ug for 1.0-3.0 mg of total protein lysate

IHC 1:20-1:200

IF/ICC 1:50-1:500

Applications

Tested Applications:

WB, IHC, IF/ICC, IP, ELISA

Cited Applications:

WB, IHC

Species Specificity:

human

Cited Species:

human

Note-IHC: suggested antigen retrieval with TE buffer pH 9.0; (*) Alternatively, antigen retrieval may be performed with citrate buffer pH 6.0

Positive Controls:

WB : HeLa cells, HepG2 cells

IP : HeLa cells,

IHC : human spleen tissue,

IF/ICC : HepG2 cells,

Background Information

Lipopolysaccharide-induced TNF factor(LITAF) is a transcription factor that identified as a regulator of TNF-alpha gene expression. It may has a role in protein degradation pathways and in tumor necrosis factor alpha(TNF-alpha) gene expression. Also it may regulate the expression of the CCL2/MCP-1 chemokine through NFKB1. Defects in LITAF may be involved in extramammary Paget disease (EMPD) carcinogenesis

Notable Publications

Author	Pubmed ID	Journal	Application
Changlin Huang	31098771	Cell Mol Neurobiol	WB
Shu Zhang	37612267	Nat Commun	IHC

Storage

Storage:

Store at -20°C. Stable for one year after shipment.

Storage Buffer:

PBS with 0.02% sodium azide and 50% glycerol pH 7.3.

Aliquoting is unnecessary for -20°C storage

*** 20ul sizes contain 0.1% BSA

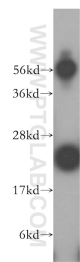
For technical support and original validation data for this product please contact:

T: 1 (888) 4PTGLAB (1-888-478-4522) (toll free in USA), or 1(312) 455-8498 (outside USA)

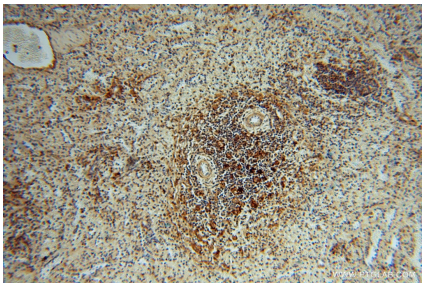
E: proteintech@ptglab.com
W: ptglab.com

This product is exclusively available under Proteintech Group brand and is not available to purchase from any other manufacturer.

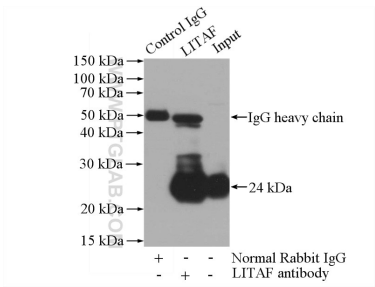
Selected Validation Data



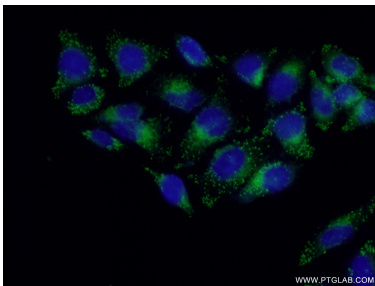
HeLa cells were subjected to SDS PAGE followed by western blot with 16797-1-AP (LITAF antibody) at dilution of 1:500 incubated at room temperature for 1.5 hours.



Immunohistochemical analysis of paraffin-embedded human spleen using 16797-1-AP (LITAF antibody) at dilution of 1:100 (under 10x lens).



IP result of anti-LITAF (IP:16797-1-AP, 4ug; Detection:16797-1-AP 1:600) with HeLa cells lysate 1520ug.



Immunofluorescent analysis of (-20°C Ethanol) fixed HepG2 cells using 16797-1-AP (LITAF antibody) at dilution of 1:50 and Alexa Fluor 488-conjugated Goat Anti-Rabbit IgG(H+L).