

For Research Use Only

# ASXL1 Polyclonal antibody

Catalog Number: 16803-1-AP



## Basic Information

### Catalog Number:

16803-1-AP

### Size:

150ul, Concentration: 450 ug/ml by Nanodrop;

### Source:

Rabbit

### Isotype:

IgG

### Immunogen Catalog Number:

AG10290

### GenBank Accession Number:

BC064984

### GeneID (NCBI):

171023

### UNIPROT ID:

Q8IXJ9

### Full Name:

additional sex combs like 1 (Drosophila)

### Calculated MW:

84aa, 10 kDa; 1541aa, 165 kDa

### Observed MW:

~200 kDa

### Purification Method:

Antigen affinity purification

### Recommended Dilutions:

WB 1:500-1:2000

## Applications

### Tested Applications:

WB, ELISA

### Species Specificity:

human

### Positive Controls:

WB : HeLa cells, K-562 cells, MCF-7 cells

## Background Information

Additional sex combs-like 1 (ASXL1) is a member of the ASXL family, which is involved in epigenetic regulation. It is one of the mammalian Asx homologs. Mutations in the ASXL1 gene are frequently found in myeloid neoplasms, breast cancers and prostate cancers (PMID: 30013160; PMID: 22436456; PMID: 26470845). In patients with myeloid malignancies, ASXL1 mutations are mostly heterozygous frameshift or nonsense mutations that result in C-terminal truncation (PMID: 30982744; PMID: 26095772; PMID: 32683582; PMID: 29643185).

## Storage

### Storage:

Store at -20°C. Stable for one year after shipment.

### Storage Buffer:

PBS with 0.02% sodium azide and 50% glycerol pH 7.3.

Aliquoting is unnecessary for -20°C storage

\*\*\* 20ul sizes contain 0.1% BSA

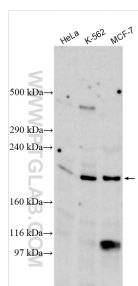
For technical support and original validation data for this product please contact:

T: 1 (888) 4PTGLAB (1-888-478-4522) (toll free in USA), or 1(312) 455-8498 (outside USA)

E: [proteintech@ptglab.com](mailto:proteintech@ptglab.com)  
W: [ptglab.com](http://ptglab.com)

This product is exclusively available under Proteintech Group brand and is not available to purchase from any other manufacturer.

## Selected Validation Data



Various lysates were subjected to Tris-acetate gel system followed by western blot with 16803-1-AP (ASXL1 antibody) at dilution of 1:1000 incubated at room temperature for 1.5 hours.