

For Research Use Only

# SMYD5 Polyclonal antibody, PBS Only

Catalog Number:16810-1-PBS



## Basic Information

**Catalog Number:**

16810-1-PBS

**Size:**

100ug , Concentration: 1 mg/ml by Nanodrop;

**Source:**

Rabbit

**Isotype:**

IgG

**Immunogen Catalog Number:**

AG10337

**GenBank Accession Number:**

BC073806

**GeneID (NCBI):**

10322

**UNIPROT ID:**

Q6GMV2

**Full Name:**

SMYD family member 5

**Calculated MW:**

302 aa, 34 kDa

**Observed MW:**

47 kDa

**Purification Method:**

Antigen affinity purification

## Applications

**Tested Applications:**

WB, Indirect ELISA

**Species Specificity:**

human, mouse, rat

## Storage

**Storage:**

Store at -80°C.

**Storage Buffer:**

PBS only, pH7.3

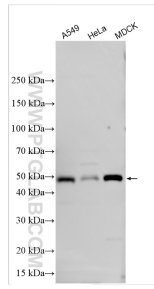
For technical support and original validation data for this product please contact:

T: 1 (888) 4PTGLAB (1-888-478-4522) (toll free in USA), or 1(312) 455-8498 (outside USA)

E: [proteintech@ptglab.com](mailto:proteintech@ptglab.com)  
W: [ptglab.com](http://ptglab.com)

This product is exclusively available under Proteintech Group brand and is not available to purchase from any other manufacturer.

## Selected Validation Data



Various lysates were subjected to SDS PAGE followed by western blot with 16810-1-AP (SMYD5 antibody) at dilution of 1:4000 incubated at room temperature for 1.5 hours. This data was developed using the same antibody clone with 16810-1-PBS in a different storage buffer formulation.