

For Research Use Only

LMF1 Polyclonal antibody

Catalog Number: 16812-1-AP

1 Publications



Basic Information

Catalog Number: 16812-1-AP	GenBank Accession Number: BC010738	Purification Method: Antigen affinity purification
Size: 150ul, Concentration: 350 ug/ml by Nanodrop and 200 ug/ml by Bradford method using BSA as the standard;	GeneID (NCBI): 64788	Recommended Dilutions: WB 1:500-1:1000 IHC 1:20-1:200
Source: Rabbit	UNIPROT ID: Q96S06	
Isotype: IgG	Full Name: lipase maturation factor 1	
Immunogen Catalog Number: AG10349	Calculated MW: 567 aa, 65 kDa	
	Observed MW: 65-70 kDa	

Applications

Tested Applications: WB, IHC, ELISA	Positive Controls: WB : SKOV-3 cells, IHC : human liver cancer tissue,
Cited Applications: WB	
Species Specificity: human, mouse, rat	
Cited Species: mouse	
Note-IHC: suggested antigen retrieval with TE buffer pH 9.0; (*) Alternatively, antigen retrieval may be performed with citrate buffer pH 6.0	

Background Information

LMF1, also named as C16orf26 and TMEM112, is involved in the maturation of lipoprotein lipase (LPL) and hepatic lipase in endoplasmic reticulum. It is required for maturation and transport of active lipoprotein lipase (LPL) through the secretory pathway.

Notable Publications

Author	Pubmed ID	Journal	Application
Miao Zhang	36175800	Int J Legal Med	WB

Storage

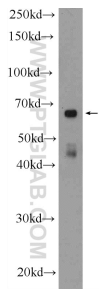
Storage:
Store at -20°C. Stable for one year after shipment.
Storage Buffer:
PBS with 0.02% sodium azide and 50% glycerol pH 7.3.
Aliquoting is unnecessary for -20°C storage

*** 20ul sizes contain 0.1% BSA

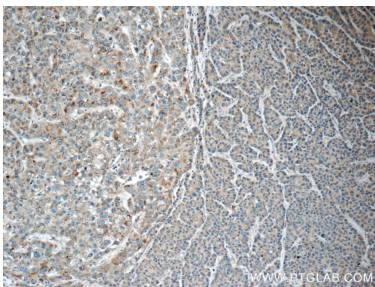
For technical support and original validation data for this product please contact:
T: 1 (888) 4PTGLAB (1-888-478-4522) (toll free in USA), or 1(312) 455-8498 (outside USA)
E: proteintech@ptglab.com
W: ptglab.com

This product is exclusively available under Proteintech Group brand and is not available to purchase from any other manufacturer.

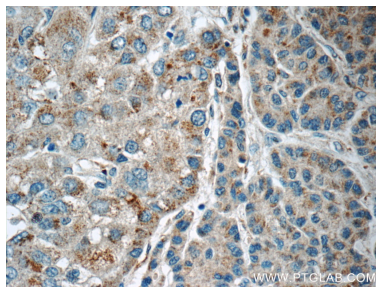
Selected Validation Data



SKOV-3 cells were subjected to SDS PAGE followed by western blot with 16812-1-AP (LMF1 Antibody) at dilution of 1:600 incubated at room temperature for 1.5 hours.



Immunohistochemical analysis of paraffin-embedded human liver cancer tissue slide using 16812-1-AP (LMF1 Antibody) at dilution of 1:50 (under 10x lens).



Immunohistochemical analysis of paraffin-embedded human liver cancer tissue slide using 16812-1-AP (LMF1 Antibody) at dilution of 1:50 (under 40x lens).