

For Research Use Only

p130Cas / BCAR1 Polyclonal antibody



Catalog Number: 16815-1-AP

Basic Information

Catalog Number: 16815-1-AP	GenBank Accession Number: BC062556	Purification Method: Antigen affinity purification
Size: 150ul , Concentration: 550 µg/ml by Nanodrop and 267 µg/ml by Bradford method using BSA as the standard;	GeneID (NCBI): 9564	Recommended Dilutions: WB 1:1000-1:8000 IP 0.5-4.0 ug for IP and 1:500-1:1000 for WB
Source: Rabbit	Full Name: breast cancer anti-estrogen resistance 1	IHC 1:50-1:500 IF 1:50-1:500
Isotype: IgG	Calculated MW: 870 aa, 93 kDa	
Immunogen Catalog Number: AG10354	Observed MW: 116 kDa	

Applications

Tested Applications:
FC, IF, IHC, IP, WB, ELISA

Species Specificity:
human, mouse, rat

Note-IHC: suggested antigen retrieval with TE buffer pH 9.0; (*) Alternatively, antigen retrieval may be performed with citrate buffer pH 6.0

Positive Controls:

WB : HeLa cells, A431 cells, HepG2 cells, T-47D cells

IP : RAW 264.7 cells,

IHC : human colon cancer tissue,

IF : HeLa cells,

Background Information

Storage

Storage:

Store at -20°C. Stable for one year after shipment.

Storage Buffer:

PBS with 0.02% sodium azide and 50% glycerol pH 7.3.

Aliquoting is unnecessary for -20°C storage

*** 20ul sizes contain 0.1% BSA

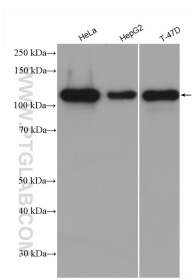
For technical support and original validation data for this product please contact:

T: 1 (888) 4PTGLAB (1-888-478-4522) (toll free in USA), or 1(312) 455-8498 (outside USA)

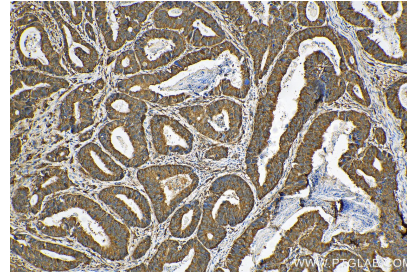
E: proteintech@ptglab.com
W: ptglab.com

This product is exclusively available under Proteintech Group brand and is not available to purchase from any other manufacturer.

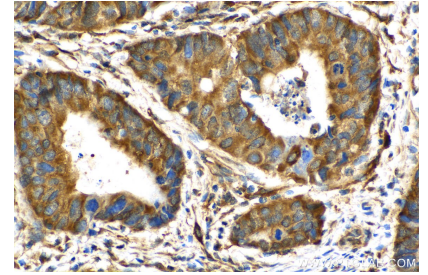
Selected Validation Data



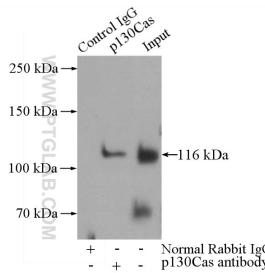
Various lysates were subjected to SDS PAGE followed by western blot with 16815-1-AP (p130Cas / BCAR1 antibody) at dilution of 1:4000 incubated at room temperature for 1.5 hours.



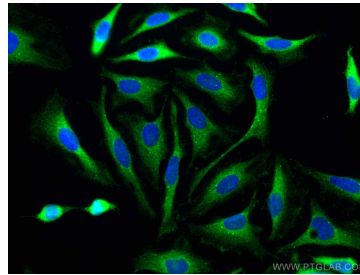
Immunohistochemical analysis of paraffin-embedded human colon cancer tissue slide using 16815-1-AP (p130Cas / BCAR1 antibody) at dilution of 1:200 (under 10x lens). Heat mediated antigen retrieval with Tris-EDTA buffer (pH 9.0).



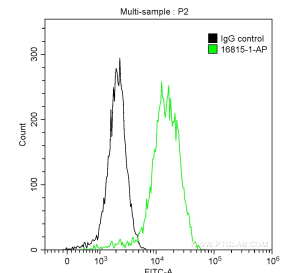
Immunohistochemical analysis of paraffin-embedded human colon cancer tissue slide using 16815-1-AP (p130Cas / BCAR1 antibody) at dilution of 1:200 (under 40x lens). Heat mediated antigen retrieval with Tris-EDTA buffer (pH 9.0).



IP Result of anti-p130Cas / BCAR1 (IP:16815-1-AP, 4ug; Detection:16815-1-AP 1:600) with RAW 264.7 cells lysate 4000ug.



Immunofluorescent analysis of (-20°C Methanol) fixed HeLa cells using p130Cas / BCAR1 antibody (16815-1-AP) at dilution of 1:200 and CoraLite®488-Conjugated AffiniPure Goat Anti-Rabbit IgG(H+L).



1×10^6 A431 cells were stained with 0.2 ug Anti-Human p130Cas / BCAR1 (16815-1-AP) and CoraLite®488-Conjugated AffiniPure Goat Anti-Rabbit IgG(H+L) at dilution 1:1000 (green), or stained with 0.2 ug isotype control and CoraLite®488-Conjugated AffiniPure Goat Anti-Rabbit IgG(H+L) at dilution 1:1000 (black). Cells were fixed with 90% MeOH.