

For Research Use Only

RBM26 Polyclonal antibody, PBS Only

Catalog Number: 16823-1-PBS



Basic Information

Catalog Number:

16823-1-PBS

Size:

100ug, Concentration: 1 mg/ml by Nanodrop;

Source:

Rabbit

Isotype:

IgG

Immunogen Catalog Number:

AG10398

GenBank Accession Number:

BC000791

GeneID (NCBI):

64062

UNIPROT ID:

Q5T8P6

Full Name:

RNA binding motif protein 26

Calculated MW:

983 aa, 111 kDa

Observed MW:

125 kDa

Purification Method:

Antigen affinity purification

Applications

Tested Applications:

WB, IHC, IF/ICC, IP, Indirect ELISA

Species Specificity:

human, mouse, rat

Storage

Storage:

Store at -80°C.

Storage Buffer:

PBS Only

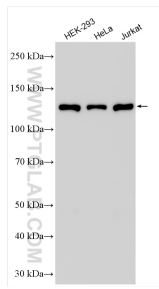
For technical support and original validation data for this product please contact:

T: 1 (888) 4PTGLAB (1-888-478-4522) (toll free in USA), or 1(312) 455-8498 (outside USA)

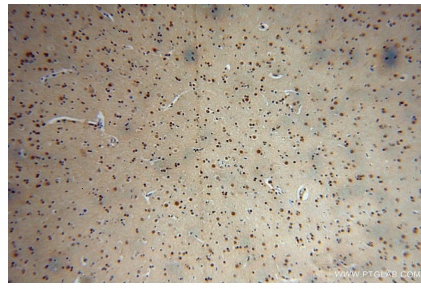
E: proteintech@ptglab.com
W: ptglab.com

This product is exclusively available under Proteintech Group brand and is not available to purchase from any other manufacturer.

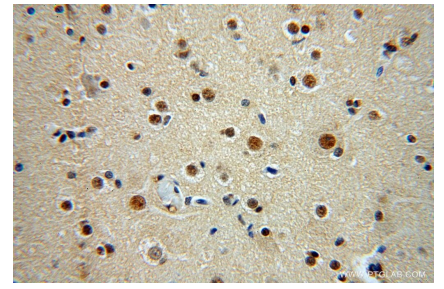
Selected Validation Data



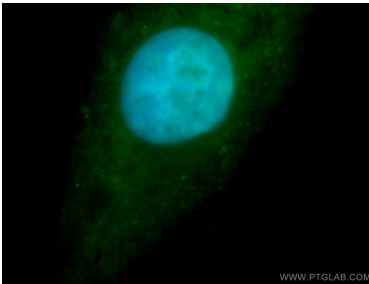
Various lysates were subjected to SDS PAGE followed by western blot with 16823-1-AP (RBM26 antibody) at dilution of 1:6000 incubated at room temperature for 1.5 hours. This data was developed using the same antibody clone with 16823-1-PBS in a different storage buffer formulation.



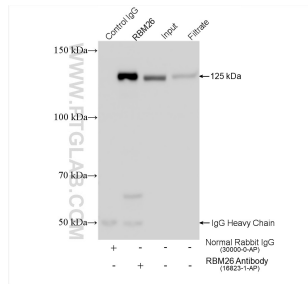
Immunohistochemical analysis of paraffin-embedded human brain using 16823-1-AP (RBM26 antibody) at dilution of 1:100 (under 10x lens). This data was developed using the same antibody clone with 16823-1-PBS in a different storage buffer formulation.



Immunohistochemical analysis of paraffin-embedded human brain using 16823-1-AP (RBM26 antibody) at dilution of 1:100 (under 40x lens). This data was developed using the same antibody clone with 16823-1-PBS in a different storage buffer formulation.



Immunofluorescent analysis of HepG2 cells, using RBM26 antibody 16823-1-AP at 1:100 dilution and FITC-labeled donkey anti-rabbit IgG (green). Blue pseudocolor = DAPI (fluorescent DNA dye). This data was developed using the same antibody clone with 16823-1-PBS in a different storage buffer formulation.



IP result of anti-RBM26 (IP:16823-1-AP, 4ug; Detection:16823-1-AP 1:5000) with HEK-293 cells lysate 1400 ug. This data was developed using the same antibody clone with 16823-1-PBS in a different storage buffer formulation.