

For Research Use Only

NIP30 Polyclonal antibody

Catalog Number: 16830-1-AP **2 Publications**



Basic Information

Catalog Number: 16830-1-AP	GenBank Accession Number: BC071952	Purification Method: Antigen affinity purification
Size: 150ul , Concentration: 900 µg/ml by Nanodrop and 400 µg/ml by Bradford method using BSA as the standard;	GeneID (NCBI): 80011	Recommended Dilutions: WB 1:500-1:2000 IP 0.5-4.0 ug for IP and 1:500-1:1000 for WB
Source: Rabbit	Full Name: NEFA-interacting nuclear protein NIP30	IF 1:50-1:500
Isotype: IgG	Calculated MW: 254 aa, 29 kDa	
Immunogen Catalog Number: AG10439	Observed MW: 29 kDa	

Applications

Tested Applications: IF, IP, WB, ELISA	Positive Controls:
Cited Applications: WB	WB : HeLa cells,
Species Specificity: human, mouse, rat	IP : HeLa cells,
Cited Species: human	IF : HeLa cells,

Background Information

NIP30, also known as NEFA-interacting nuclear protein 30, FAM192A (family with sequence similarity 192, member A), is a 254 amino acid nuclear protein encoded by a gene that maps to human chromosome 16q13.

Notable Publications

Author	Pubmed ID	Journal	Application
Doueiri Rami R	22876852	Retrovirology	WB
Xiao Gao	32764536	Nat Commun	WB

Storage

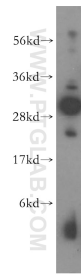
Storage:
Store at -20°C. Stable for one year after shipment.
Storage Buffer:
PBS with 0.02% sodium azide and 50% glycerol pH 7.3.
Aliquoting is unnecessary for -20°C storage

***** 20ul sizes contain 0.1% BSA**

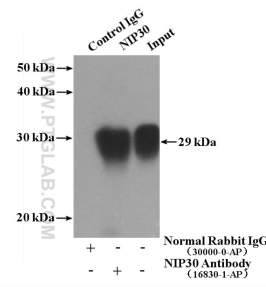
For technical support and original validation data for this product please contact:
T: 1 (888) 4PTGLAB (1-888-478-4522) (toll free in USA), or 1(312) 455-8498 (outside USA)
E: proteintech@ptglab.com
W: ptglab.com

This product is exclusively available under Proteintech Group brand and is not available to purchase from any other manufacturer.

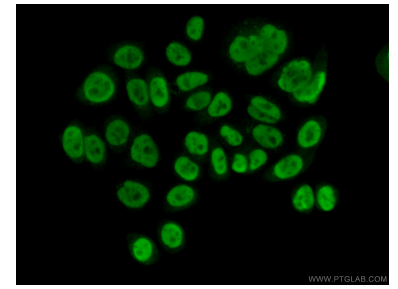
Selected Validation Data



HeLa cells were subjected to SDS PAGE followed by western blot with 16830-1-AP (NIP30 antibody) at dilution of 1:500 incubated at room temperature for 1.5 hours.



IP Result of anti-NIP30 (IP:16830-1-AP, 4ug; Detection:16830-1-AP 1:500) with HeLa cells lysate 1080ug.



Immunofluorescent analysis of (10% Formaldehyde) fixed HeLa cells using 16830-1-AP (NIP30 antibody) at dilution of 1:50 and Alexa Fluor 488-conjugated AffiniPure Goat Anti-Rabbit IgG(H+L).