

For Research Use Only

GIT1 Polyclonal antibody

Catalog Number: 16838-1-AP



Basic Information

Catalog Number:

16838-1-AP

Size:

150ul , Concentration: 67 µg/ml by Bradford method using BSA as the standard;

Source:

Rabbit

Isotype:

IgG

Immunogen Catalog Number:

AG10517

GenBank Accession Number:

BC067358

GeneID (NCBI):

28964

UNIPROT ID:

Q9Y2X7

Full Name:

G protein-coupled receptor kinase interacting ArfGAP 1

Calculated MW:

694 aa, 77 kDa

Purification Method:

Antigen affinity purification

Applications

Tested Applications:

WB, IP, ELISA

Species Specificity:

human, mouse, rat

Storage

Storage:

Store at -20°C. Stable for one year after shipment.

Storage Buffer:

PBS with 0.02% sodium azide and 50% glycerol pH 7.3.

Aliquoting is unnecessary for -20°C storage

*** 20ul sizes contain 0.1% BSA

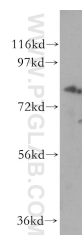
For technical support and original validation data for this product please contact:

T: 1 (888) 4PTGLAB (1-888-478-4522) (toll free in USA), or 1(312) 455-8498 (outside USA)

E: proteintech@ptglab.com
W: ptglab.com

This product is exclusively available under Proteintech Group brand and is not available to purchase from any other manufacturer.

Selected Validation Data



mouse brain tissue were subjected to SDS PAGE followed by western blot with 16838-1-AP (GIT1 antibody) at dilution of 1:500 incubated at room temperature for 1.5 hours.