

Apolipoprotein A II Polyclonal antibody

Catalog Number: 16845-1-AP

3 Publications

Basic Information

Catalog Number:

16845-1-AP

Size:

150ul, Concentration: 600 µg/ml by Nanodrop and 333 µg/ml by Bradford method using BSA as the standard;

Source:

Rabbit

Isotype:

IgG

Immunogen Catalog Number:

AG9863

GenBank Accession Number:

BC005282

GeneID (NCBI):

336

Full Name:

apolipoprotein A-II

Calculated MW:

100 aa, 11 kDa

Observed MW:

7-9 kDa (monomer), 15 kDa (dimer)

Purification Method:

Antigen affinity purification

Recommended Dilutions:

WB 1:500-1:2000

IP 0.5-4.0 µg for IP and 1:500-1:1000 for WB

IHC 1:50-1:500

IF 1:50-1:500

Applications

Tested Applications:

IF, IHC, IP, WB, ELISA

Cited Applications:

WB

Species Specificity:

human

Cited Species:

human, mouse

Positive Controls:

WB: human plasma tissue,

IP: human plasma tissue,

IHC: human liver tissue, human hepatocirrhosis tissue

IF: HepG2 cells,

Note-IHC: suggested antigen retrieval with TE buffer pH 9.0; (*) Alternatively, antigen retrieval may be performed with citrate buffer pH 6.0

Background Information

Apolipoprotein A-II (APOA2) is a major component of high density lipoprotein (HDL) and it plays an important role in directing the fate of lipid metabolism among HDL. It is primarily synthesized by liver. The predicted MW of ApoA2 is 11 kDa, while the mature form is smaller (7-10 kDa) since the signal peptide was cleaved. In humans, most of circulating apoA2 exist as dimer. Five types of APOA2 dimer exist: homodimer apoA2-ATQ/ATQ, heterodimer apoA2-ATQ/AT, homodimer apoA2-AT/AT, apoA2-AT/A, and apoA2-A/A. ApoA2 isoforms are considered to be some of the most promising serum/plasma biomarkers for aiding the early detection of pancreatic cancer. (PMID: 29081441, 29481802)

Notable Publications

Author	Pubmed ID	Journal	Application
Zhonghao Li	36498935	Int J Mol Sci	WB
Yanying Wang	34728628	Nat Commun	WB
Jun-Jun Qiu	31911152	Exp Cell Res	WB

Storage

Storage:

Store at -20°C. Stable for one year after shipment.

Storage Buffer:

PBS with 0.02% sodium azide and 50% glycerol pH 7.3.

Aliquoting is unnecessary for -20°C storage

*** 20ul sizes contain 0.1% BSA

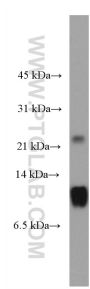
For technical support and original validation data for this product please contact:

T: 1 (888) 4PTGLAB (1-888-478-4522) (toll free in USA), or 1(312) 455-8498 (outside USA)

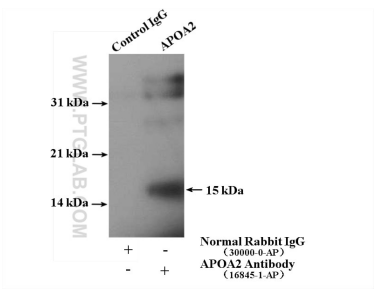
E: proteintech@ptglab.com
W: ptglab.com

This product is exclusively available under Proteintech Group brand and is not available to purchase from any other manufacturer.

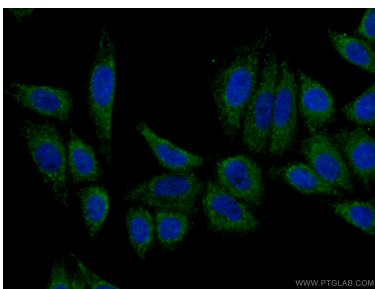
Selected Validation Data



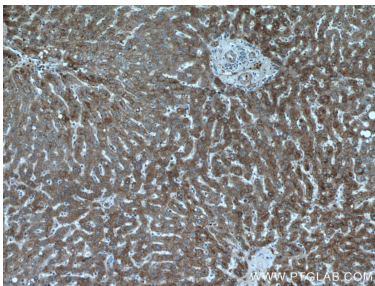
human plasma were subjected to SDS PAGE followed by western blot with 16845-1-AP (Apolipoprotein A II antibody) at dilution of 1:1000 incubated at room temperature for 1.5 hours.



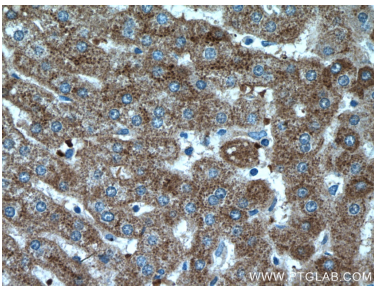
IP result of anti-Apolipoprotein A II (IP:16845-1-AP, 4ug; Detection:16845-1-AP 1:500) with human plasma lysate 4000 ug.



Immunofluorescent analysis of (4% PFA) fixed HepG2 cells using 16845-1-AP (Apolipoprotein A II antibody) at dilution of 1:50 and CoraLite488-Conjugated AffiniPure Goat Anti-Rabbit IgG(H+L).



Immunohistochemical analysis of paraffin-embedded human liver tissue slide using 16845-1-AP (Apolipoprotein A II antibody) at dilution of 1:200 (under 10x lens).



Immunohistochemical analysis of paraffin-embedded human liver tissue slide using 16845-1-AP (Apolipoprotein A II antibody) at dilution of 1:200 (under 40x lens).