

For Research Use Only

Cytokeratin 6A-specific Polyclonal antibody

Catalog Number: 16853-1-AP

Featured Product



Basic Information

Catalog Number:

16853-1-AP

Size:

150ul, Concentration: 400 ug/ml by Nanodrop and 373 ug/ml by Bradford method using BSA as the standard;

Source:

Rabbit

Isotype:

IgG

GenBank Accession Number:

NM_005554

GeneID (NCBI):

3853

UNIPROT ID:

P02538

Full Name:

keratin 6A

Calculated MW:

60 kDa

Observed MW:

56 kDa

Purification Method:

Antigen affinity purification

Recommended Dilutions:

WB 1:500-1:1000

IP 0.5-4.0 ug for 1.0-3.0 mg of total protein lysate

IHC 1:50-1:500

Applications

Tested Applications:

WB, IHC, IP, ELISA

Species Specificity:

human, mouse

Note-IHC: suggested antigen retrieval with TE buffer pH 9.0; (*) Alternatively, antigen retrieval may be performed with citrate buffer pH 6.0

Positive Controls:

WB: A431 cells, AML12 cells, HeLa cells, human saliva, mouse skin tissue

IP: HeLa cells,

IHC: human skin cancer tissue, human bowen disease

Background Information

Keratins are a large family of proteins that form the intermediate filament cytoskeleton of epithelial cells, which are classified into two major sequence types. Type I keratins are a group of acidic intermediate filament proteins, including K9-K23, and the hair keratins Ha1-Ha8. Type II keratins are the basic or neutral counterparts to the acidic type I keratins, including K1-K8, and the hair keratins, Hb1-Hb6. Keratin 6 is a type II keratin. It is used as marker for epidermal hyperproliferation and differentiation. Three keratin 6 isoforms were found, ketatin 6A, 6B and 6C. They share more than 99% identical DNA sequence. This antibody is against all three isoforms of keratin 6, but it does not bind other keratins.

Storage

Storage:

Store at -20°C. Stable for one year after shipment.

Storage Buffer:

PBS with 0.02% sodium azide and 50% glycerol pH 7.3.

Aliquoting is unnecessary for -20°C storage

*** 20ul sizes contain 0.1% BSA

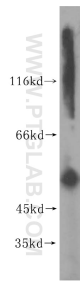
For technical support and original validation data for this product please contact:

T: 1 (888) 4PTGLAB (1-888-478-4522) (toll free in USA), or 1(312) 455-8498 (outside USA)

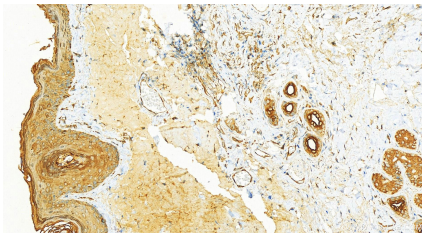
E: proteintech@ptglab.com
W: ptglab.com

This product is exclusively available under Proteintech Group brand and is not available to purchase from any other manufacturer.

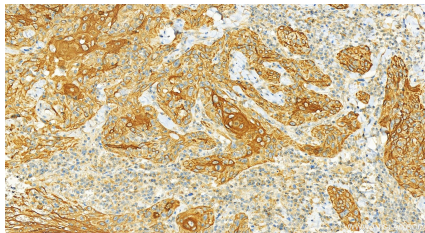
Selected Validation Data



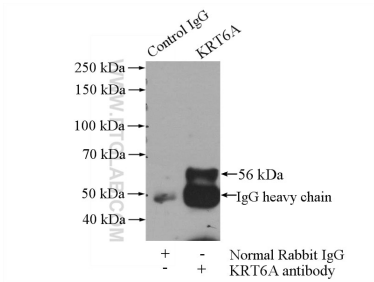
A431 cells were subjected to SDS PAGE followed by western blot with 16853-1-AP (Cytokeratin 6A-specific antibody) at dilution of 1:300 incubated at room temperature for 1.5 hours.



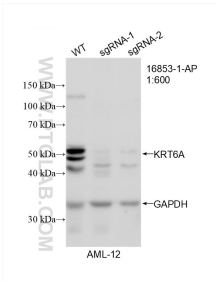
Immunohistochemical analysis of paraffin-embedded skin cancer slide using 16853-1-AP (Cytokeratin 6A-specific antibody) at dilution of 1:200 (under 20x lens). Heat mediated antigen retrieval with Tris-EDTA buffer (pH 9.0).



Immunohistochemical analysis of paraffin-embedded skin cancer slide using 16853-1-AP (Cytokeratin 6A-specific antibody) at dilution of 1:200 (under 20x lens). Heat mediated antigen retrieval with Tris-EDTA buffer (pH 9.0).



IP result of anti-Cytokeratin 6A-specific (IP:16853-1-AP, 4ug; Detection:16853-1-AP 1:300) with HeLa cells lysate 520ug.



WB result of Cytokeratin 6A antibody (16853-1-AP; 1:600; room temperature for 1.5 hours) with wild-type and Cytokeratin 6A knockout AML 12 cells.