

For Research Use Only

RAB3C-specific Polyclonal antibody

Catalog Number: 16867-1-AP



Basic Information

Catalog Number:

16867-1-AP

Size:

150ul , Concentration: 600 ug/ml by Nanodrop and 200 ug/ml by Bradford method using BSA as the standard;

Source:

Rabbit

Isotype:

IgG

GenBank Accession Number:

NM_138453

GeneID (NCBI):

115827

UNIPROT ID:

Q96E17

Full Name:

RAB3C, member RAS oncogene family

Calculated MW:

26 kDa

Observed MW:

26 kDa

Purification Method:

Antigen affinity purification

Recommended Dilutions:

WB 1:500-1:1000

IF/ICC 1:10-1:100

Applications

Tested Applications:

WB, IF/ICC, ELISA

Species Specificity:

human, mouse, rat

Positive Controls:

WB : human brain tissue,

IF/ICC : HepG2 cells,

Storage

Storage:

Store at -20°C. Stable for one year after shipment.

Storage Buffer:

PBS with 0.02% sodium azide and 50% glycerol pH 7.3.

Aliquoting is unnecessary for -20°C storage

*** 20ul sizes contain 0.1% BSA

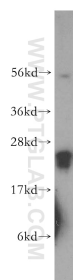
For technical support and original validation data for this product please contact:

T: 1 (888) 4PTGLAB (1-888-478-4522) (toll free in USA), or 1(312) 455-8498 (outside USA)

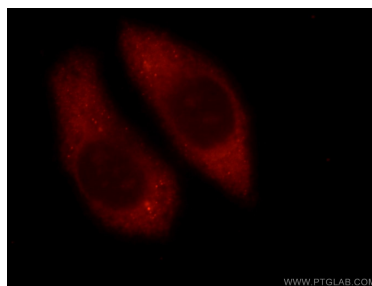
E: proteintech@ptglab.com
W: ptglab.com

This product is exclusively available under Proteintech Group brand and is not available to purchase from any other manufacturer.

Selected Validation Data



human brain tissue were subjected to SDS PAGE followed by western blot with 16867-1-AP (RAB3C-specific antibody) at dilution of 1:300 incubated at room temperature for 1.5 hours.



Immunofluorescent analysis of HepG2 cells using 16867-1-AP (RAB3C-specific antibody) at dilution of 1:25 and Rhodamine-Goat anti-Rabbit IgG.