

For Research Use Only

# RAB27A-specific Polyclonal antibody



Catalog Number: 16868-1-AP

Featured Product

1 Publications

## Basic Information

<b>Catalog Number:</b> 16868-1-AP	<b>GenBank Accession Number:</b> NM_004580	<b>Purification Method:</b> Antigen affinity purification
<b>Size:</b> 150ul, Concentration: 133 µg/ml by Bradford method using BSA as the standard;	<b>GeneID (NCBI):</b> 5873	<b>Recommended Dilutions:</b> WB 1:500-1:3000 IHC 1:50-1:500
<b>Source:</b> Rabbit	<b>Full Name:</b> RAB27A, member RAS oncogene family	
<b>Isotype:</b> IgG	<b>Calculated MW:</b> 25 kDa	
	<b>Observed MW:</b> 25 kDa	

## Applications

<b>Tested Applications:</b> IHC, WB, ELISA	<b>Positive Controls:</b>
<b>Cited Applications:</b> WB	<b>WB:</b> HL-60 cells, K562, PC-12 cells, U-87 MG cells
<b>Species Specificity:</b> human, rat	<b>IHC:</b> human lymphoma tissue, human liver cancer tissue
<b>Cited Species:</b> mouse	

**Note-IHC: suggested antigen retrieval with TE buffer pH 9.0; (\*) Alternatively, antigen retrieval may be performed with citrate buffer pH 6.0**

## Background Information

Rab27A is a member of a large family of Ras-related small GTPases. The protein is membrane-bound and may be involved in protein transport and small GTPase mediated signal transduction. Recent studies suggest that Rab27A is associated with melanosomes in pigmented cells and regulates melanosome transport via its interaction with actin-based cellular motors such as myosin Va and myosin VIIa. RAB27A is also required for regulated secretion in cytotoxic T lymphocytes. Rab27A is implicated in several diseases, including Griscelli syndrome, choroideremia, and the Hermansky-Pudlak syndrome mouse model, gunmetal.

## Notable Publications

Author	Pubmed ID	Journal	Application
Lay Thant	35932574	Biochem Biophys Res Commun	WB

## Storage

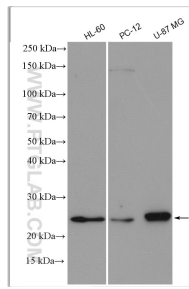
**Storage:**  
Store at -20°C. Stable for one year after shipment.  
**Storage Buffer:**  
PBS with 0.02% sodium azide and 50% glycerol pH 7.3.  
Aliquoting is unnecessary for -20°C storage

\*\*\* 20ul sizes contain 0.1% BSA

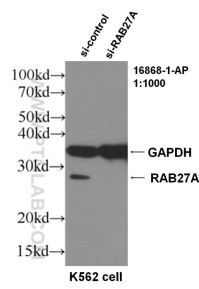
For technical support and original validation data for this product please contact:  
T: 1 (888) 4PTGLAB (1-888-478-4522) (toll free in USA), or 1(312) 455-8498 (outside USA)  
E: proteintech@ptglab.com  
W: ptglab.com

This product is exclusively available under Proteintech Group brand and is not available to purchase from any other manufacturer.

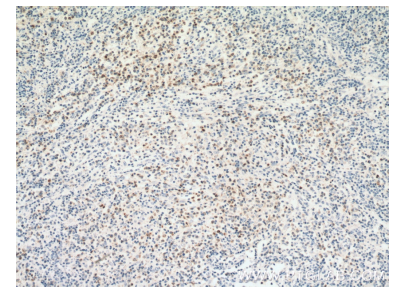
## Selected Validation Data



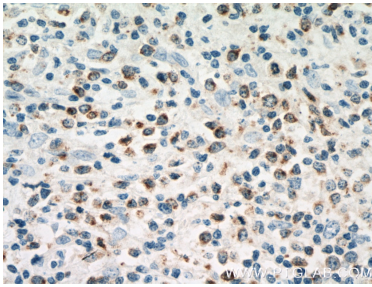
Various lysates were subjected to SDS PAGE followed by western blot with 16868-1-AP (RAB27A-specific antibody) at dilution of 1:1500 incubated at room temperature for 1.5 hours.



WB result of RAB27A antibody (16868-1-AP, 1:1000) with si-Control and si-RAB27A transfected K562 cells.



Immunohistochemical analysis of paraffin-embedded human lymphoma tissue slide using 16868-1-AP (RAB27A-specific antibody) at dilution of 1:200 (under 10x lens. Heat mediated antigen retrieval with Tris-EDTA buffer (pH 9.0).



Immunohistochemical analysis of paraffin-embedded human lymphoma tissue slide using 16868-1-AP (RAB27A-specific antibody) at dilution of 1:200 (under 40x lens. Heat mediated antigen retrieval with Tris-EDTA buffer (pH 9.0).