

For Research Use Only

IFIH1-Specific Polyclonal antibody

Catalog Number: 16879-1-AP



Basic Information

Catalog Number: 16879-1-AP	GenBank Accession Number: NM_022168	Purification Method: Antigen affinity purification
Size: 150ul, Concentration: 213 µg/ml by Bradford method using BSA as the standard;	GeneID (NCBI): 64135	Recommended Dilutions: WB 1:1000-1:4000
Source: Rabbit	Full Name: interferon induced with helicase C domain 1	
Isotype: IgG	Calculated MW: 117 kDa	
	Observed MW: 70 kDa, 90 kDa	

Applications

Tested Applications: WB, ELISA	Positive Controls: WB : HeLa cells, Jurkat cells
Species Specificity: human	

Background Information

IFIH1 (Interferon-induced helicase C domain-containing protein 1) is a putative RNA helicase that is upregulated in response to treatment with IFNB or IFNB and MEZ. It is also named as MDA5 and RH116. Ectopic expression of MDA5 in melanoma cells resulted in reduced colony formation, suggesting an interaction of the CARD and apoptotic signal molecules. Functional analysis indicated that MDA5 is an RNA-dependent ATPase. IFIH1 has an apparent molecular mass of 117-130 kDa, and always other bands (70 kDa and 90 kDa) can be detected as cleaved products (PMID: 17267501). This antibody is specific to IFIH1.

Storage

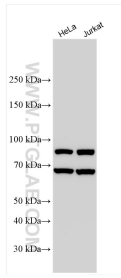
Storage:
Store at -20°C. Stable for one year after shipment.
Storage Buffer:
PBS with 0.02% sodium azide and 50% glycerol pH 7.3.
Aliquoting is unnecessary for -20°C storage

*** 20ul sizes contain 0.1% BSA

For technical support and original validation data for this product please contact:
T: 1 (888) 4PTGLAB (1-888-478-4522) (toll free in USA), or 1(312) 455-8498 (outside USA)
E: proteintech@ptglab.com
W: ptglab.com

This product is exclusively available under Proteintech Group brand and is not available to purchase from any other manufacturer.

Selected Validation Data



Various lysates were subjected to SDS PAGE followed by western blot with 16879-1-AP (IFIH1-Specific antibody) at dilution of 1:2000 incubated at room temperature for 1.5 hours.