

For Research Use Only

# Pepsinogen II Polyclonal antibody

Catalog Number: 16881-1-AP



## Basic Information

<b>Catalog Number:</b> 16881-1-AP	<b>GenBank Accession Number:</b> BC073740	<b>Purification Method:</b> Antigen affinity purification
<b>Size:</b> 150ul , Concentration: 350 ug/ml by Nanodrop and 220 ug/ml by Bradford method using BSA as the standard;	<b>GeneID (NCBI):</b> 5225	<b>Recommended Dilutions:</b> WB 1:500-1:1000 IHC 1:50-1:500
<b>Source:</b> Rabbit	<b>UNIPROT ID:</b> P20142	
<b>Isotype:</b> IgG	<b>Full Name:</b> progastricsin (pepsinogen C)	
<b>Immunogen Catalog Number:</b> AG10332	<b>Calculated MW:</b> 388 aa, 42 kDa	
	<b>Observed MW:</b> 42 kDa	

## Applications

<b>Tested Applications:</b> WB, IHC, ELISA	<b>Positive Controls:</b>
<b>Species Specificity:</b> human, mouse	<b>WB :</b> human stomach tissue, mouse stomach tissue
<b>Note-IHC:</b> suggested antigen retrieval with <b>TE buffer pH 9.0; (*) Alternatively, antigen retrieval may be performed with citrate buffer pH 6.0</b>	<b>IHC :</b> human stomach cancer tissue,

## Background Information

Pepsinogen II also known as progastricsin or PGC(pepsinogen C), is an aspartic protease expressed primarily in gastric chief cells and is a novel marker of type 2 cells with advantages over many of the current markers used to identify type 2 cells in the developing lung(PMID:14578117). It is involved in proteolysis and peptidolysis. This protein has 2 isoforms produced by alternative splicing.

## Storage

**Storage:**  
Store at -20°C. Stable for one year after shipment.  
**Storage Buffer:**  
PBS with 0.02% sodium azide and 50% glycerol pH 7.3.  
Aliquoting is unnecessary for -20°C storage

\*\*\* 20ul sizes contain 0.1% BSA

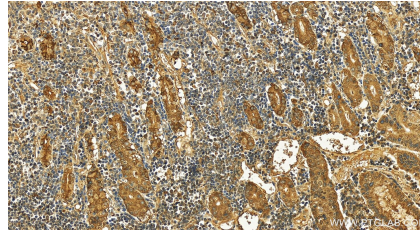
For technical support and original validation data for this product please contact:  
T: 1 (888) 4PTGLAB (1-888-478-4522) (toll free in USA), or 1(312) 455-8498 (outside USA)  
E: [proteintech@ptglab.com](mailto:proteintech@ptglab.com)  
W: [ptglab.com](http://ptglab.com)

This product is exclusively available under Proteintech Group brand and is not available to purchase from any other manufacturer.

## Selected Validation Data



human stomach tissue were subjected to SDS PAGE followed by western blot with 16881-1-AP (Pepsinogen II antibody) at dilution of 1:800 incubated at room temperature for 1.5 hours.



Immunohistochemical analysis of paraffin-embedded human stomach cancer tissue slide using 16881-1-AP (Pepsinogen II antibody) at dilution of 1:200 (under 20x lens). Heat mediated antigen retrieval with Tris-EDTA buffer (pH 9.0).