

For Research Use Only

ATAD1 Polyclonal antibody

Catalog Number: 16882-1-AP



Basic Information

Catalog Number: 16882-1-AP	GenBank Accession Number: BC010868	Purification Method: Antigen affinity purification
Size: 150ul , Concentration: 200 µg/ml by Nanodrop and 173 µg/ml by Bradford method using BSA as the standard;	GeneID (NCBI): 84896	Recommended Dilutions: WB 1:500-1:2000 IP 0.5-4.0 ug for IP and 1:500-1:2000 for WB
Source: Rabbit	Full Name: ATPase family, AAA domain containing 1	
Isotype: IgG	Calculated MW: 361 aa, 41 kDa	
Immunogen Catalog Number: AG10343	Observed MW: 32 kDa	

Applications

Tested Applications: IP, WB, ELISA	Positive Controls: WB : HepG2 cells, mouse brain tissue, rat brain tissue IP : mouse brain tissue,
Species Specificity: human, mouse, rat	

Background Information

The mitochondrial AAA (ATPase Associated with diverse cellular Activities) protein ATAD1 (in humans; Msp1 in yeast) removes mislocalized membrane proteins, as well as stuck import substrates from the mitochondrial outer membrane, facilitating their re-insertion into their cognate organelles and maintaining mitochondria's protein import capacity.

Storage

Storage:
Store at -20°C. Stable for one year after shipment.
Storage Buffer:
PBS with 0.02% sodium azide and 50% glycerol pH 7.3.
Aliquoting is unnecessary for -20°C storage

*** 20ul sizes contain 0.1% BSA

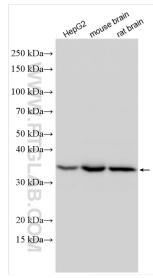
For technical support and original validation data for this product please contact:

T: 1 (888) 4PTGLAB (1-888-478-4522) (toll free in USA), or 1(312) 455-8498 (outside USA)

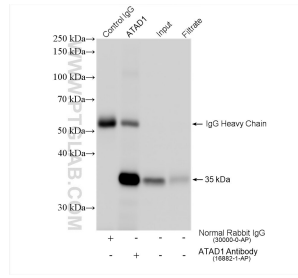
E: proteintech@ptglab.com
W: ptglab.com

This product is exclusively available under Proteintech Group brand and is not available to purchase from any other manufacturer.

Selected Validation Data



Various lysates were subjected to SDS PAGE followed by western blot with 16882-1-AP (ATAD1 antibody) at dilution of 1:1000 incubated at room temperature for 1.5 hours.



IP result of anti-ATAD1(IP:16882-1-AP, 4ug; Detection:16882-1-AP 1:1000) with mouse brain tissue lysate 1280 ug.