

For Research Use Only

ATAD1 Polyclonal antibody, PBS Only

Catalog Number: 16882-1-PBS



Basic Information

Catalog Number:

16882-1-PBS

Size:

100ug, Concentration: 1 mg/ml by Nanodrop;

Source:

Rabbit

Isotype:

IgG

Immunogen Catalog Number:

AG10343

GenBank Accession Number:

BC010868

GeneID (NCBI):

84896

UNIPROT ID:

Q8NBU5

Full Name:

ATPase family, AAA domain containing 1

Calculated MW:

361 aa, 41 kDa

Observed MW:

32 kDa

Purification Method:

Antigen affinity purification

Applications

Tested Applications:

WB, IHC, IP, Indirect ELISA

Species Specificity:

human, mouse, rat

Background Information

The mitochondrial AAA (ATPase Associated with diverse cellular Activities) protein ATAD1 (in humans; Msp1 in yeast) removes mislocalized membrane proteins, as well as stuck import substrates from the mitochondrial outer membrane, facilitating their re-insertion into their cognate organelles and maintaining mitochondria's protein import capacity.

Storage

Storage:

Store at -80°C.

Storage Buffer:

PBS Only

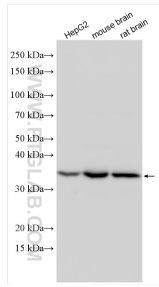
For technical support and original validation data for this product please contact:

T: 1 (888) 4PTGLAB (1-888-478-4522) (toll free in USA), or 1(312) 455-8498 (outside USA)

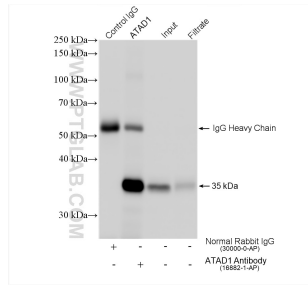
E: proteintech@ptglab.com
W: ptglab.com

This product is exclusively available under Proteintech Group brand and is not available to purchase from any other manufacturer.

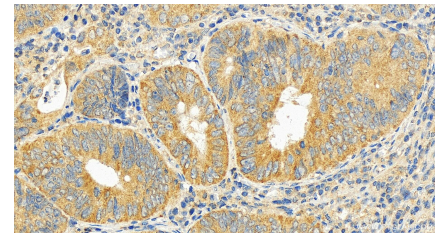
Selected Validation Data



Various lysates were subjected to SDS PAGE followed by western blot with 16882-1-AP (ATAD1 antibody) at dilution of 1:1000 incubated at room temperature for 1.5 hours. This data was developed using the same antibody clone with 16882-1-PBS in a different storage buffer formulation.



IP result of anti-ATAD1 (IP:16882-1-AP, 4ug; Detection:16882-1-AP 1:1000) with mouse brain tissue lysate 1280 ug. This data was developed using the same antibody clone with 16882-1-PBS in a different storage buffer formulation.



Immunohistochemical analysis of paraffin-embedded human colon cancer tissue slide using 16882-1-AP (ATAD1 antibody) at dilution of 1:200 (under 20x lens). Heat mediated antigen retrieval with Tris-EDTA buffer (pH 9.0). This data was developed using the same antibody clone with 16882-1-PBS in a different storage buffer formulation.