

For Research Use Only

SPAG16 Polyclonal antibody

Catalog Number: 16883-1-AP

1 Publications



Basic Information

Catalog Number:

16883-1-AP

Size:

150ul, Concentration: 700 ug/ml by Nanodrop and 293 ug/ml by Bradford method using BSA as the standard;

Source:

Rabbit

Isotype:

IgG

Immunogen Catalog Number:

AG10348

GenBank Accession Number:

BC009614

GeneID (NCBI):

79582

UNIPROT ID:

Q8NOX2

Full Name:

sperm associated antigen 16

Calculated MW:

631 aa, 71 kDa

Observed MW:

71 kDa

Purification Method:

Antigen affinity purification

Recommended Dilutions:

WB 1:500-1:2000

IP 0.5-4.0 ug for 1.0-3.0 mg of total protein lysate

IHC 1:20-1:200

IF/ICC 1:20-1:200

Applications

Tested Applications:

WB, IHC, IF/ICC, IP, ELISA

Cited Applications:

WB

Species Specificity:

human, mouse, rat

Cited Species:

human

Note-IHC: suggested antigen retrieval with TE buffer pH 9.0; (*) Alternatively, antigen retrieval may be performed with citrate buffer pH 6.0

Positive Controls:

WB : rat testis tissue, mouse testis tissue

IP : mouse testis tissue,

IHC : human brain tissue,

IF/ICC : HepG2 cells,

Background Information

SPAG16 (also known as PF20) is an orthologue of Chlamydomonas PF20, a component of the alga axoneme central apparatus that is required for flagellar motility. SPAG16 is highly expressed in the testis, low abundant or absent from other tissues. The SPAG16 gene encodes two major proteins, a 71-kDa SPAG16L and a smaller 35-kDa SPAG16S nuclear protein that represents the C-terminus of SPAG16L. SPAG16L was detected abundantly in the cytoplasm, while SPAG16S was detected in both cytoplasm and nucleus. This antibody was raised against the N-terminal region of SPAG16 and mainly recognizes SPAG16L.

Notable Publications

Author	Pubmed ID	Journal	Application
Xing Guo	37001189	Ecotoxicol Environ Saf	WB

Storage

Storage:

Store at -20°C. Stable for one year after shipment.

Storage Buffer:

PBS with 0.02% sodium azide and 50% glycerol pH 7.3.

Aliquoting is unnecessary for -20°C storage

*** 20ul sizes contain 0.1% BSA

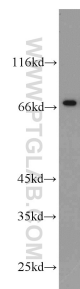
For technical support and original validation data for this product please contact:

T: 1 (888) 4PTGLAB (1-888-478-4522) (toll free in USA), or 1(312) 455-8498 (outside USA)

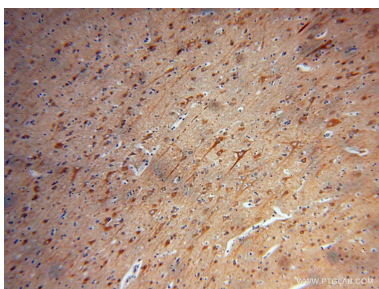
E: proteintech@ptglab.com
W: ptglab.com

This product is exclusively available under Proteintech Group brand and is not available to purchase from any other manufacturer.

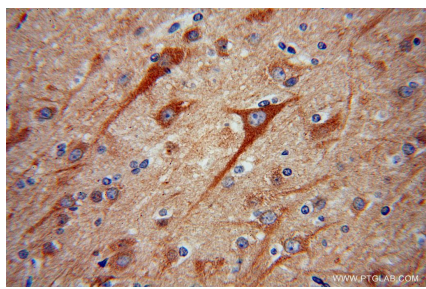
Selected Validation Data



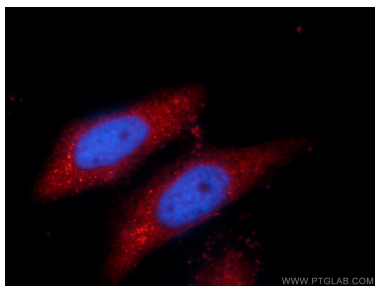
rat testis tissue were subjected to SDS PAGE followed by western blot with 16883-1-AP (SPAG16 antibody) at dilution of 1:1000 incubated at room temperature for 1.5 hours.



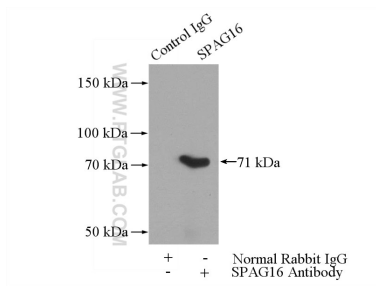
Immunohistochemical analysis of paraffin-embedded human brain using 16883-1-AP (SPAG16 antibody) at dilution of 1:100 (under 10x lens).



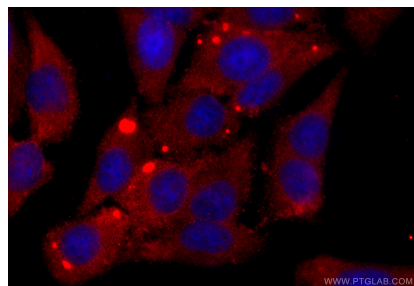
Immunohistochemical analysis of paraffin-embedded human brain using 16883-1-AP (SPAG16 antibody) at dilution of 1:100 (under 40x lens).



Immunofluorescent analysis of HepG2 cells, using SPAG16 antibody 16883-1-AP at 1:50 dilution and Rhodamine-labeled goat anti-rabbit IgG (red). Blue pseudocolor = DAPI (fluorescent DNA dye).



IP result of anti-SPAG16 (IP:16883-1-AP, 4ug; Detection:16883-1-AP 1:1000) with mouse testis tissue lysate 4000ug.



Immunofluorescent analysis of (-20°C Ethanol) fixed HepG2 cells using SPAG16 antibody (16883-1-AP) at dilution of 1:200 and CoraLite®594-Conjugated Goat Anti-Rabbit IgG(H+L) (SA00013-4).