

For Research Use Only

SPAG16 Polyclonal antibody, PBS Only

Catalog Number:16883-1-PBS



Basic Information

Catalog Number: 16883-1-PBS	GenBank Accession Number: BC009614	Purification Method: Antigen affinity purification
Size: 100ug , Concentration: 1 mg/ml by Nanodrop;	GeneID (NCBI): 79582	
Source: Rabbit	UNIPROT ID: Q8NOX2	
Isotype: IgG	Full Name: sperm associated antigen 16	
Immunogen Catalog Number: AG10348	Calculated MW: 631 aa, 71 kDa	
	Observed MW: 71 kDa	

Applications

Tested Applications:
WB, IHC, IF/ICC, IP, Indirect ELISA

Species Specificity:
human, mouse, rat

Background Information

SPAG16 (also known as PF20) is an orthologue of Chlamydomonas PF20, a component of the alga axoneme central apparatus that is required for flagellar motility. SPAG16 is highly expressed in the testis, low abundant or absent from other tissues. The SPAG16 gene encodes two major proteins, a 71-kDa SPAG16L and a smaller 35-kDa SPAG16S nuclear protein that represents the C-terminus of SPAG16L. SPAG16L was detected abundantly in the cytoplasm, while SPAG16S was detected in both cytoplasm and nucleus. This antibody was raised against the N-terminal region of SPAG16 and mainly recognizes SPAG16L.

Storage

Storage:
Store at -80°C.

Storage Buffer:
PBS Only

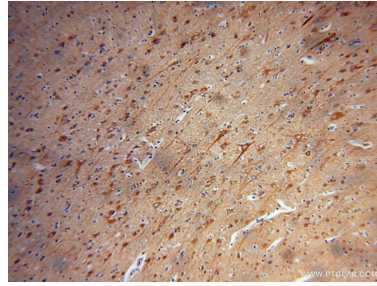
For technical support and original validation data for this product please contact:
T: 1 (888) 4PTGLAB (1-888-478-4522) (toll free in USA), or 1(312) 455-8498 (outside USA) E: proteintech@ptglab.com
W: ptglab.com

This product is exclusively available under Proteintech Group brand and is not available to purchase from any other manufacturer.

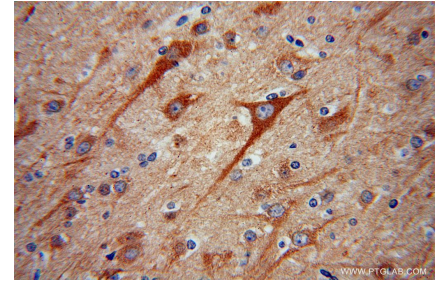
Selected Validation Data



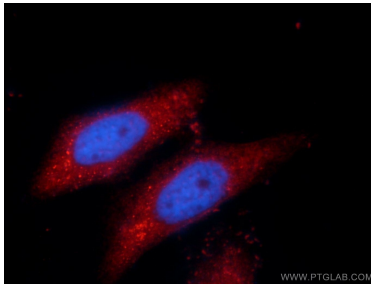
rat testis tissue were subjected to SDS PAGE followed by western blot with 16883-1-AP (SPAG16 antibody) at dilution of 1:1000 incubated at room temperature for 1.5 hours. This data was developed using the same antibody clone with 16883-1-PBS in a different storage buffer formulation.



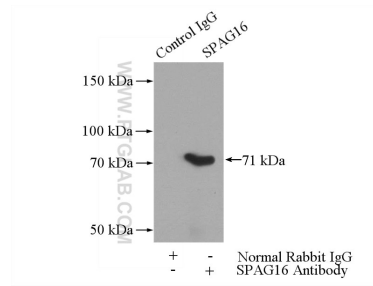
Immunohistochemical analysis of paraffin-embedded human brain using 16883-1-AP (SPAG16 antibody) at dilution of 1:100 (under 10x lens). This data was developed using the same antibody clone with 16883-1-PBS in a different storage buffer formulation.



Immunohistochemical analysis of paraffin-embedded human brain using 16883-1-AP (SPAG16 antibody) at dilution of 1:100 (under 40x lens). This data was developed using the same antibody clone with 16883-1-PBS in a different storage buffer formulation.



Immunofluorescent analysis of HepG2 cells, using SPAG16 antibody 16883-1-AP at 1:50 dilution and Rhodamine-labeled goat anti-rabbit IgG (red). Blue pseudocolor = DAPI (fluorescent DNA dye). This data was developed using the same antibody clone with 16883-1-PBS in a different storage buffer formulation.



IP result of anti-SPAG16 (IP:16883-1-AP, 4ug; Detection:16883-1-AP 1:1000) with mouse testis tissue lysate 4000ug. This data was developed using the same antibody clone with 16883-1-PBS in a different storage buffer formulation.