

For Research Use Only

MTCH2 Polyclonal antibody

Catalog Number: 16888-1-AP

Featured Product

12 Publications



Basic Information

Catalog Number:

16888-1-AP

Size:

150ul, Concentration: 500 µg/ml by Nanodrop;

Source:

Rabbit

Isotype:

IgG

Immunogen Catalog Number:

AG10399

GenBank Accession Number:

BC000875

GeneID (NCBI):

23788

UNIPROT ID:

Q9Y6C9

Full Name:

mitochondrial carrier homolog 2 (C. elegans)

Calculated MW:

303 aa, 33 kDa

Observed MW:

33 kDa

Purification Method:

Antigen affinity purification

Recommended Dilutions:

WB 1:2000-1:14000

IP 0.5-4.0 µg for 1.0-3.0 mg of total protein lysate

IHC 1:50-1:500

IF 1:50-1:500

Applications

Tested Applications:

IF, IHC, IP, WB, ELISA

Cited Applications:

CoIP, IF, WB

Species Specificity:

human, rat

Cited Species:

human, mouse, pig

Note-IHC: suggested antigen retrieval with TE buffer pH 9.0; (*) Alternatively, antigen retrieval may be performed with citrate buffer pH 6.0

Positive Controls:

WB : HEK-293 cells, HeLa cells, HepG2 cells

IP : HepG2 cells,

IHC : human liver tissue,

IF : U-251 cells, rat testis tissue

Background Information

Notable Publications

Author	Pubmed ID	Journal	Application
Katherine Labbé	34586346	J Cell Biol	WB,IF
Qin Jiang	30339471	FASEBJ	WB
Mari J Aaltonen	34785538	Life Sci Alliance	WB

Storage

Storage:

Store at -20°C. Stable for one year after shipment.

Storage Buffer:

PBS with 0.02% sodium azide and 50% glycerol pH 7.3.

Aliquoting is unnecessary for -20°C storage

*** 20ul sizes contain 0.1% BSA

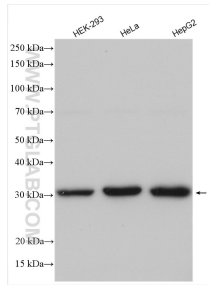
For technical support and original validation data for this product please contact:

T: 1 (888) 4PTGLAB (1-888-478-4522) (toll free in USA), or 1(312) 455-8498 (outside USA)

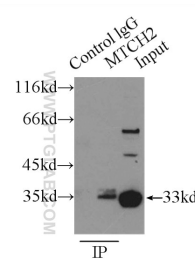
E: proteintech@ptglab.com
W: ptglab.com

This product is exclusively available under Proteintech Group brand and is not available to purchase from any other manufacturer.

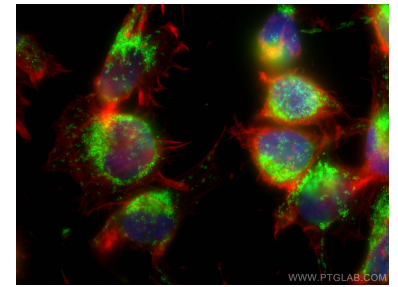
Selected Validation Data



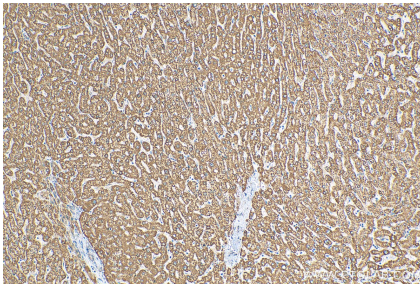
Various lysates were subjected to SDS PAGE followed by western blot with 16888-1-AP (MTCH2 antibody) at dilution of 1:7000 incubated at room temperature for 1.5 hours.



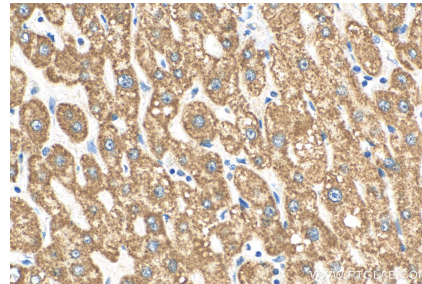
IP result of anti-MTCH2 (IP:16888-1-AP, 3ug; Detection:16888-1-AP 1:1000) with HepG2 cells lysate 4000ug.



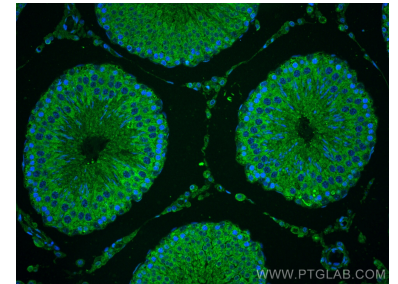
Immunofluorescent analysis of (4% PFA) fixed U-251 cells using MTCH2 antibody (16888-1-AP) at dilution of 1:200 and CoraLite®488-Conjugated AffiniPure Goat Anti-Rabbit IgG(H+L), CL594-Phalloidin (red).



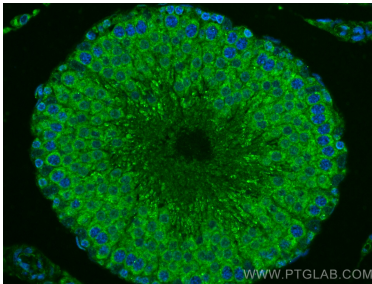
Immunohistochemical analysis of paraffin-embedded human liver tissue slide using 16888-1-AP (MTCH2 antibody) at dilution of 1:200 (under 10x lens). Heat mediated antigen retrieval with Tris-EDTA buffer (pH 9.0).



Immunohistochemical analysis of paraffin-embedded human liver tissue slide using 16888-1-AP (MTCH2 antibody) at dilution of 1:200 (under 40x lens). Heat mediated antigen retrieval with Tris-EDTA buffer (pH 9.0).



Immunofluorescent analysis of (4% PFA) fixed rat testis tissue using MTCH2 antibody (16888-1-AP) at dilution of 1:200 and CoraLite®488-Conjugated AffiniPure Goat Anti-Rabbit IgG(H+L).



Immunofluorescent analysis of (4% PFA) fixed rat testis tissue using MTCH2 antibody (16888-1-AP) at dilution of 1:200 and CoraLite®488-Conjugated AffiniPure Goat Anti-Rabbit IgG(H+L).