

For Research Use Only

RPGR Polyclonal antibody

Catalog Number: 16891-1-AP

4 Publications



Basic Information

Catalog Number: 16891-1-AP	GenBank Accession Number: BC031624	Purification Method: Antigen affinity purification
Size: 150ul , Concentration: 300 ug/ml by Nanodrop;	GeneID (NCBI): 6103	Recommended Dilutions: WB: 1:500-1:1000
Source: Rabbit	UNIPROT ID: Q92834	IHC: 1:50-1:500
Isotype: IgG	Full Name: retinitis pigmentosa GTPase regulator	IF/ICC: 1:10-1:100
Immunogen Catalog Number: AG10405	Calculated MW: 113 kDa	
	Observed MW: 100-105 kDa, 70 kDa	

Applications

Tested Applications: WB, IHC, IF/ICC, ELISA	Positive Controls:
Cited Applications: WB, IF	WB : mouse eye tissue, mouse liver tissue, rat liver tissue, SH-SY5Y cells, Y79 cells, mouse retina tissue
Species Specificity: human, mouse	IHC : mouse eye tissue, human heart tissue, human kidney tissue
Cited Species: human, mouse	IF/ICC : hTERT-RPE1 cells,
Note-IHC: suggested antigen retrieval with TE buffer pH 9.0; (*) Alternatively, antigen retrieval may be performed with citrate buffer pH 6.0	

Background Information

RPGR is a protein with a series of six RCC1-like domains (RLDs), characteristic of the highly conserved guanine nucleotide exchange factors. The encoded protein is found in the Golgi body and interacts with RPGRIP1. This protein localizes to the outer segment of rod photoreceptors and is essential for their viability. Mutations in this gene have been associated with X-linked retinitis pigmentosa (XLRP). Multiple alternatively spliced transcript variants that encode different isoforms of this gene have been reported, but the full-length nature of only some have been determined. This antibody can recognize all the isoforms of RPGR.

Notable Publications

Author	Pubmed ID	Journal	Application
Dario Cilleros-Rodriguez	36063381	Elife	WB
Fidelle Chahine Karam	35330501	J Pers Med	WB
Olivier Mercey	39528655	EMBO J	IF

Storage

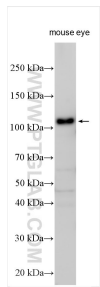
Storage:
Store at -20°C. Stable for one year after shipment.
Storage Buffer:
PBS with 0.02% sodium azide and 50% glycerol, pH7.3
Aliquoting is unnecessary for -20°C storage

*** 20ul sizes contain 0.1% BSA

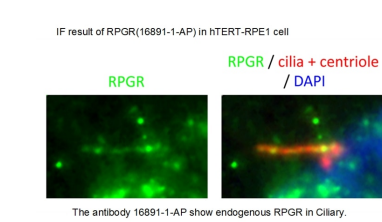
For technical support and original validation data for this product please contact:
T: 1 (888) 4PTGLAB (1-888-478-4522) (toll free in USA), or 1(312) 455-8498 (outside USA)
E: proteintech@ptglab.com
W: ptglab.com

This product is exclusively available under Proteintech Group brand and is not available to purchase from any other manufacturer.

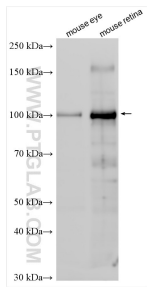
Selected Validation Data



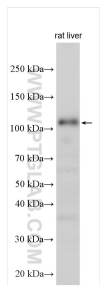
Various lysates were subjected to SDS PAGE followed by western blot with 16891-1-AP (RPGR antibody) at dilution of 1:1000 incubated at room temperature for 1.5 hours.



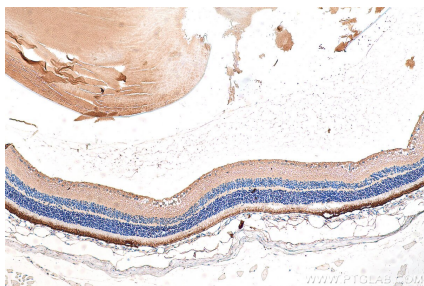
IF result of anti-RPGR (16891-1-AP) in hTERT-RPE1 cell by Dr. Seongjin Seo.



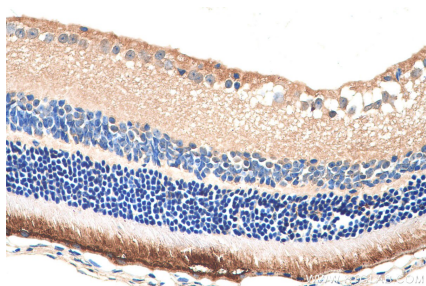
Various lysates were subjected to SDS PAGE followed by western blot with 16891-1-AP (RPGR antibody) at dilution of 1:800 incubated at room temperature for 1.5 hours.



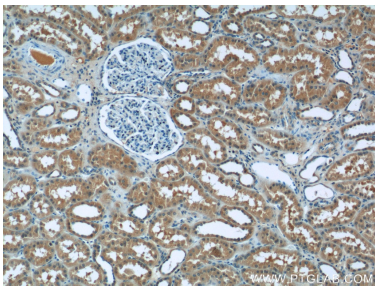
Various lysates were subjected to SDS PAGE followed by western blot with 16891-1-AP (RPGR antibody) at dilution of 1:1000 incubated at room temperature for 1.5 hours.



Immunohistochemical analysis of paraffin-embedded mouse eye tissue slide using 16891-1-AP (RPGR antibody) at dilution of 1:200 (under 10x lens). Heat mediated antigen retrieval with Tris-EDTA buffer (pH 9.0).



Immunohistochemical analysis of paraffin-embedded mouse eye tissue slide using 16891-1-AP (RPGR antibody) at dilution of 1:200 (under 40x lens). Heat mediated antigen retrieval with Tris-EDTA buffer (pH 9.0).



Immunohistochemical analysis of paraffin-embedded human kidney tissue slide using 16891-1-AP (RPGR Antibody) at dilution of 1:50 (under 10x lens).