

For Research Use Only

# HMGCL Polyclonal antibody

Catalog Number: 16898-1-AP

8 Publications



## Basic Information

### Catalog Number:

16898-1-AP

### Size:

150ul, Concentration: 700 ug/ml by Nanodrop;

### Source:

Rabbit

### Isotype:

IgG

### Immunogen Catalog Number:

AG10426

### GenBank Accession Number:

BC010570

### GeneID (NCBI):

3155

### UNIPROT ID:

P35914

### Full Name:

3-hydroxymethyl-3-methylglutaryl-Coenzyme A lyase

### Calculated MW:

325 aa, 34 kDa

### Observed MW:

34 kDa

### Purification Method:

Antigen affinity purification

### Recommended Dilutions:

WB 1:1000-1:6000

IP 0.5-4.0 ug for 1.0-3.0 mg of total protein lysate

IHC 1:20-1:200

## Applications

### Tested Applications:

WB, IHC, IP, ELISA

### Cited Applications:

WB, IHC, IP

### Species Specificity:

human, mouse, rat

### Cited Species:

human, mouse

**Note-IHC: suggested antigen retrieval with TE buffer pH 9.0; (\*) Alternatively, antigen retrieval may be performed with citrate buffer pH 6.0**

### Positive Controls:

**WB**: mouse liver tissue, mouse brain tissue, human heart tissue, rat liver tissue

**IP**: mouse spleen tissue,

**IHC**: human liver tissue, human ovary tissue, human spleen tissue, human testis tissue

## Notable Publications

Author	Pubmed ID	Journal	Application
De Huang	27644987	Cell Res	WB
Jin-Tao Li	32029896	Nat Cell Biol	IHC
Xiaohan Cui	36508088	Hepatol Int	WB,IHC

## Storage

### Storage:

Store at -20°C. Stable for one year after shipment.

### Storage Buffer:

PBS with 0.02% sodium azide and 50% glycerol pH 7.3.

Aliquoting is unnecessary for -20°C storage

\*\*\* 20ul sizes contain 0.1% BSA

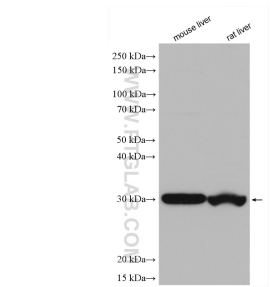
For technical support and original validation data for this product please contact:

T: 1 (888) 4PTGLAB (1-888-478-4522) (toll free in USA), or 1(312) 455-8498 (outside USA)

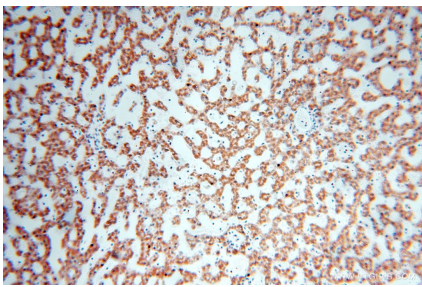
E: proteintech@ptglab.com  
W: ptglab.com

This product is exclusively available under Proteintech Group brand and is not available to purchase from any other manufacturer.

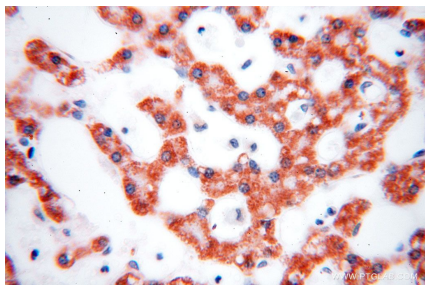
Selected Validation Data



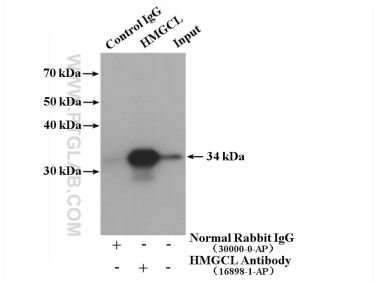
Various lysates were subjected to SDS PAGE followed by western blot with 16898-1-AP (HMGCL antibody) at dilution of 1:3000 incubated at room temperature for 1.5 hours.



Immunohistochemical analysis of paraffin-embedded human liver using 16898-1-AP (HMGCL antibody) at dilution of 1:100 (under 10x lens).



Immunohistochemical analysis of paraffin-embedded human liver using 16898-1-AP (HMGCL antibody) at dilution of 1:100 (under 40x lens).



IP result of anti-HMGCL (IP:16898-1-AP, 4ug; Detection:16898-1-AP 1:500) with mouse spleen tissue lysate 4000 ug.