

For Research Use Only

# SEC11C Polyclonal antibody, PBS Only

Catalog Number: 16901-1-PBS



## Basic Information

<b>Catalog Number:</b> 16901-1-PBS	<b>GenBank Accession Number:</b> BC009703	<b>Purification Method:</b> Antigen affinity purification
<b>Size:</b> 100ug, Concentration: 1 mg/ml by Nanodrop;	<b>GeneID (NCBI):</b> 90701	
<b>Source:</b> Rabbit	<b>UNIPROT ID:</b> Q9BY50	
<b>Isotype:</b> IgG	<b>Full Name:</b> SEC11 homolog C (S. cerevisiae)	
<b>Immunogen Catalog Number:</b> AG10442	<b>Calculated MW:</b> 192 aa, 22 kDa	
	<b>Observed MW:</b> 16-22 kDa	

## Applications

**Tested Applications:**  
WB, Indirect ELISA

**Species Specificity:**  
human, mouse, rat

## Background Information

SEC11C (Signal peptidase complex catalytic subunit SEC11C), also known as SPC21. It is located in the Endoplasmic reticulum membrane. Catalytic component of the signal peptidase complex (SPC) which catalyzes the cleavage of N-terminal signal sequences from nascent proteins as they are translocated into the lumen of the endoplasmic reticulum. Specifically cleaves N-terminal signal peptides that contain a hydrophobic alpha-helix (h-region) shorter than 18-20 amino acids. The molecular weight of SEC11C is 22 kDa. It has been reported that its molecular weight is 16kDa (PMID: 38183983).

## Storage

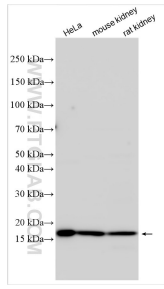
**Storage:**  
Store at -80°C.

**Storage Buffer:**  
PBS only, pH7.3

For technical support and original validation data for this product please contact:  
T: 1 (888) 4PTGLAB (1-888-478-4522) (toll free in USA), or 1(312) 455-8498 (outside USA)      E: proteintech@ptglab.com  
W: ptglab.com

**This product is exclusively available under Proteintech Group brand and is not available to purchase from any other manufacturer.**

## Selected Validation Data



Various lysates were subjected to SDS PAGE followed by western blot with 16901-1-AP (SEC11C antibody) at dilution of 1:3000 incubated at room temperature for 1.5 hours. This data was developed using the same antibody clone with 16901-1-PBS in a different storage buffer formulation.