

For Research Use Only

gp210 Polyclonal antibody

Catalog Number: 16909-1-AP



Basic Information

Catalog Number:
16909-1-AP

Size:
150ul, Concentration: 300 µg/ml by Nanodrop and 233 µg/ml by Bradford method using BSA as the standard;

Source:
Rabbit

Isotype:
IgG

Immunogen Catalog Number:
AG10533

GenBank Accession Number:
BC067089

GeneID (NCBI):
23225

Full Name:
nucleoporin 210kDa

Calculated MW:
967aa, 106 kDa; 1887aa, 205 kDa

Observed MW:
205 kDa

Purification Method:
Antigen affinity purification

Recommended Dilutions:
WB 1:200-1:1000
IP 0.5-4.0 ug for IP and 1:150-1:600 for WB

Applications

Tested Applications:
IP, WB, ELISA

Species Specificity:
human, mouse, rat

Positive Controls:

WB: mouse lung tissue, mouse thymus tissue, MCF-7 cells

IP: HeLa cells,

Background Information

Storage

Storage:

Store at -20°C. Stable for one year after shipment.

Storage Buffer:

PBS with 0.02% sodium azide and 50% glycerol pH 7.3.

Aliquoting is unnecessary for -20°C storage

***** 20ul sizes contain 0.1% BSA**

For technical support and original validation data for this product please contact:

T: 1 (888) 4PTGLAB (1-888-478-4522) (toll free in USA), or 1(312) 455-8498 (outside USA)

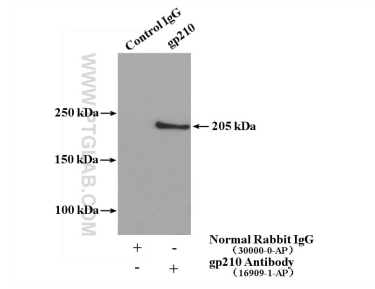
E: proteintech@ptglab.com
W: ptglab.com

This product is exclusively available under Proteintech Group brand and is not available to purchase from any other manufacturer.

Selected Validation Data



mouse lung tissue were subjected to SDS PAGE followed by western blot with 16909-1-AP (gp210 antibody) at dilution of 1:300 incubated at room temperature for 1.5 hours.



IP result of anti-gp210 (IP:16909-1-AP, 4ug; Detection:16909-1-AP 1:300) with HeLa cells lysate 3040 ug.