

For Research Use Only

# PROS1 Polyclonal antibody

Catalog Number: 16910-1-AP

11 Publications



## Basic Information

<b>Catalog Number:</b> 16910-1-AP	<b>GenBank Accession Number:</b> BC015801	<b>Purification Method:</b> Antigen affinity purification
<b>Size:</b> 150ul, Concentration: 400 µg/ml by Nanodrop;	<b>GeneID (NCBI):</b> 5627	<b>Recommended Dilutions:</b> WB 1:500-1:1000 IHC 1:20-1:200 IF 1:50-1:500
<b>Source:</b> Rabbit	<b>Full Name:</b> protein S (alpha)	
<b>Isotype:</b> IgG	<b>Calculated MW:</b> 75 kDa	
<b>Immunogen Catalog Number:</b> AG10539	<b>Observed MW:</b> 70 kDa	

## Applications

**Tested Applications:**  
FC, IF, IHC, WB, ELISA

**Cited Applications:**  
FC, IF, IHC, WB

**Species Specificity:**  
human, mouse

**Cited Species:**  
human, mouse, Plasmodium falciparum

**Note-IHC: suggested antigen retrieval with TE buffer pH 9.0; (\*) Alternatively, antigen retrieval may be performed with citrate buffer pH 6.0**

**Positive Controls:**

**WB:** human placenta tissue, DU 145 cells, mouse placenta tissue, HepG2 cells, HuH-7 cells

**IHC:** human liver tissue,

**IF:** HepG2 cells,

## Background Information

PROS1, also named as Vitamin K-dependent protein S, is a 676 amino acid protein, which contains 4 EGF-like domains, contains one Gla (gamma-carboxy-glutamate) domain and contains 2 laminin G-like domains. PROS1 as a secreted protein platelets alpha granules is expressed in plasma. PROS1 is a cofactor to activated protein C in the degradation of coagulation factors Va and VIIIa and helps to prevent coagulation and stimulating fibrinolysis.

## Notable Publications

Author	Pubmed ID	Journal	Application
Zhao-Hui Wang	25997409	Mol Med Rep	IF
Tang Liang L	23813890	Am J Hematol	WB,IF
Weiyu Xu	31956102	Aging (Albany NY)	WB,IHC

## Storage

**Storage:**

Store at -20°C. Stable for one year after shipment.

**Storage Buffer:**

PBS with 0.02% sodium azide and 50% glycerol pH 7.3.

Aliquoting is unnecessary for -20°C storage

\*\*\* 20ul sizes contain 0.1% BSA

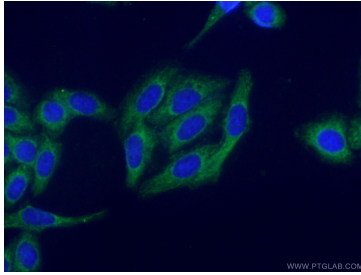
For technical support and original validation data for this product please contact:

T: 1 (888) 4PTGLAB (1-888-478-4522) (toll free in USA), or 1(312) 455-8498 (outside USA)

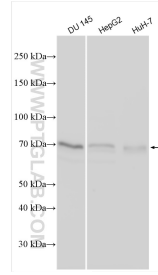
E: proteintech@ptglab.com  
W: ptglab.com

This product is exclusively available under Proteintech Group brand and is not available to purchase from any other manufacturer.

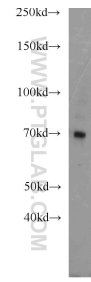
## Selected Validation Data



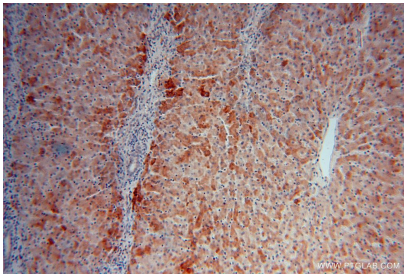
Immunofluorescent analysis of (-20°C Ethanol) fixed HepG2 cells using 16910-1-AP (PROS1 antibody) at dilution of 1:50 and Alexa Fluor 488-conjugated AffiniPure Goat Anti-Rabbit IgG(H+L).



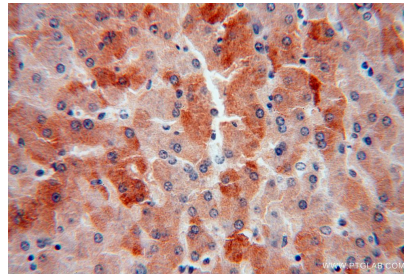
Various lysates were subjected to SDS PAGE followed by western blot with 16910-1-AP (PROS1 antibody) at dilution of 1:3000 incubated at room temperature for 1.5 hours.



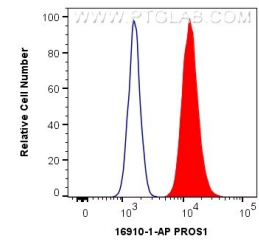
human placenta tissue were subjected to SDS PAGE followed by western blot with 16910-1-AP (PROS1 antibody) at dilution of 1:1000 incubated at room temperature for 1.5 hours.



Immunohistochemical analysis of paraffin-embedded human liver using 16910-1-AP (PROS1 antibody) at dilution of 1:100 (under 10x lens).



Immunohistochemical analysis of paraffin-embedded human liver using 16910-1-AP (PROS1 antibody) at dilution of 1:100 (under 40x lens).



$1 \times 10^6$  HepG2 cells were intracellularly stained with 0.4 ug Anti-Human PROS1 (16910-1-AP) and CoraLite®488-Conjugated AffiniPure Goat Anti-Rabbit IgG(H+L) at dilution 1:1000 (red), or 0.4 ug Isotype Control. Cells were fixed with 4% PFA and permeabilized with Flow Cytometry Perm Buffer (PF00011-C).