

For Research Use Only

# HLA-G Polyclonal antibody

Catalog Number: 16913-1-AP **3 Publications**



## Basic Information

|  |   |  |
|--|---|--|
| <b>Catalog Number:</b><br>16913-1-AP   | <b>GenBank Accession Number:</b><br>BC021708                      | <b>Purification Method:</b><br>Antigen affinity purification |
| <b>Size:</b><br>150ul , Concentration: 300 ug/ml by Nanodrop and 267 ug/ml by Bradford method using BSA as the standard; | <b>GeneID (NCBI):</b><br>3135                                     | <b>Recommended Dilutions:</b><br>WB 1:1000-1:4000            |
| <b>Source:</b><br>Rabbit   | <b>UNIPROT ID:</b><br>P17693                                      |  |
| <b>Isotype:</b><br>IgG   | <b>Full Name:</b><br>major histocompatibility complex, class I, G |  |
| <b>Immunogen Catalog Number:</b><br>AG10577  | <b>Calculated MW:</b><br>338 aa, 38 kDa                           |  |
|  | <b>Observed MW:</b><br>33-45 kDa                                  |  |

## Applications

|  |  |
|--|--|
| <b>Tested Applications:</b><br>WB, ELISA | <b>Positive Controls:</b><br>WB : human placenta tissue, |
| <b>Cited Applications:</b><br>WB, IHC    |  |
| <b>Species Specificity:</b><br>human     |  |
| <b>Cited Species:</b><br>human           |  |

## Background Information

Human major histocompatibility complex (MHC) antigens, also referred to as human leukocyte antigens (HLA), are encoded by genes located on the short arm of chromosome 6 (6p21.3). HLA-G is a non-classical MHC class I molecule with multiple immunoregulatory properties. HLA-G exhibits a restricted pattern of expression that includes placental extravillous trophoblasts at the maternal-fetal interface, where it abolishes maternal immune cell activity against fetus and establishes immune tolerance. Aberrant expression of HLA-G has been found in a variety of human neoplastic diseases. It plays an important role in the escape of tumor cells from immunosurveillance.

## Notable Publications

| Author      | Pubmed ID | Journal       | Application |
|-------------|-----------|---------------|-------------|
| Zhi Chen    | 34105233  | Aging Cell    | IHC         |
| Xinyuan Cui | 31889361  | Cell Prolif   | WB          |
| Jiayu Wang  | 34489969  | Front Immunol | IHC         |

## Storage

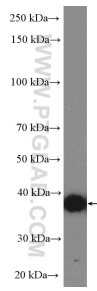
**Storage:**  
Store at -20°C. Stable for one year after shipment.  
**Storage Buffer:**  
PBS with 0.02% sodium azide and 50% glycerol pH 7.3.  
Aliquoting is unnecessary for -20°C storage

**\*\*\* 20ul sizes contain 0.1% BSA**

For technical support and original validation data for this product please contact:  
T: 1 (888) 4PTGLAB (1-888-478-4522) (toll free in USA), or 1(312) 455-8498 (outside USA)  
E: proteintech@ptglab.com  
W: ptglab.com

**This product is exclusively available under Proteintech Group brand and is not available to purchase from any other manufacturer.**

## Selected Validation Data



human placenta tissue were subjected to SDS PAGE followed by western blot with 16913-1-AP (HLA-G Antibody) at dilution of 1:2000 incubated at room temperature for 1.5 hours.