

For Research Use Only

KLHDC4 Polyclonal antibody

Catalog Number: 16915-1-AP

Featured Product

1 Publications



Basic Information

Catalog Number:

16915-1-AP

Size:

150ul , Concentration: 450 ug/ml by Nanodrop and 333 ug/ml by Bradford method using BSA as the standard;

Source:

Rabbit

Isotype:

IgG

Immunogen Catalog Number:

AG10096

GenBank Accession Number:

BC011680

GeneID (NCBI):

54758

UNIPROT ID:

Q8TBB5

Full Name:

kelch domain containing 4

Calculated MW:

520aa,58 kDa; 489aa,55 kDa

Observed MW:

58 kDa

Purification Method:

Antigen affinity purification

Recommended Dilutions:

WB 1:500-1:1000

Applications

Tested Applications:

WB, ELISA

Cited Applications:

WB

Species Specificity:

human, mouse

Cited Species:

human

Positive Controls:

WB : mouse thymus tissue, human stomach tissue, Jurkat cells

Notable Publications

Author	Pubmed ID	Journal	Application
Masayo Kamikokura	38473243	Cancers (Basel)	WB

Storage

Storage:

Store at -20°C. Stable for one year after shipment.

Storage Buffer:

PBS with 0.02% sodium azide and 50% glycerol pH 7.3.

Aliquoting is unnecessary for -20°C storage

*** 20ul sizes contain 0.1% BSA

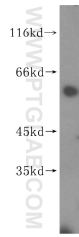
For technical support and original validation data for this product please contact:

T: 1 (888) 4PTGLAB (1-888-478-4522) (toll free in USA), or 1(312) 455-8498 (outside USA)

E: proteintech@ptglab.com
W: ptglab.com

This product is exclusively available under Proteintech Group brand and is not available to purchase from any other manufacturer.

Selected Validation Data



mouse thymus tissue were subjected to SDS PAGE followed by western blot with 16915-1-AP (KLHDC4 antibody) at dilution of 1:500 incubated at room temperature for 1.5 hours.