

For Research Use Only

KRCC1 Polyclonal antibody

Catalog Number: 16916-1-AP

Featured Product

2 Publications



Basic Information

Catalog Number:

16916-1-AP

Size:

150ul, Concentration: 550 ug/ml by Nanodrop and 273 ug/ml by Bradford method using BSA as the standard;

Source:

Rabbit

Isotype:

IgG

Immunogen Catalog Number:

AG10157

GenBank Accession Number:

BC107580

GeneID (NCBI):

51315

UNIPROT ID:

Q9NPI7

Full Name:

lysine-rich coiled-coil 1

Calculated MW:

187 aa, 22 kDa

Observed MW:

31-35 kDa

Purification Method:

Antigen affinity purification

Recommended Dilutions:

WB 1:500-1:1000

IF/ICC 1:50-1:500

Applications

Tested Applications:

WB, IF/ICC, ELISA

Cited Applications:

WB, IF

Species Specificity:

human

Cited Species:

human

Positive Controls:

WB : MCF-7 cells,

IF/ICC : HepG2 cells,

Notable Publications

Author	Pubmed ID	Journal	Application
Fifi Neizer-Ashun	36243983	Nucleic Acids Res	WB,IF
Shailendra Kumar Dhar Dwivedi	31908025	FASEB J	WB

Storage

Storage:

Store at -20°C. Stable for one year after shipment.

Storage Buffer:

PBS with 0.02% sodium azide and 50% glycerol pH 7.3.

Aliquoting is unnecessary for -20°C storage

*** 20ul sizes contain 0.1% BSA

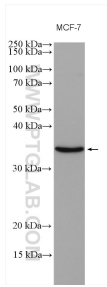
For technical support and original validation data for this product please contact:

T: 1 (888) 4PTGLAB (1-888-478-4522) (toll free in USA), or 1(312) 455-8498 (outside USA)

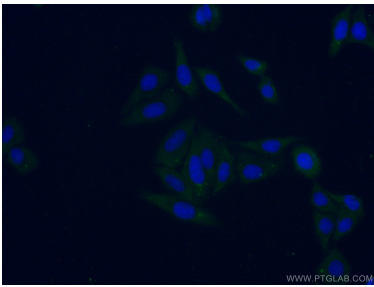
E: proteintech@ptglab.com
W: ptglab.com

This product is exclusively available under Proteintech Group brand and is not available to purchase from any other manufacturer.

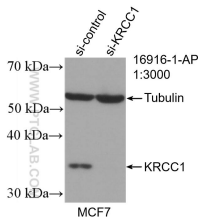
Selected Validation Data



MCF-7 cells were subjected to SDS PAGE followed by western blot with 16916-1-AP (KRCC1 antibody) at dilution of 1:600 incubated at room temperature for 1.5 hours.



Immunofluorescent analysis of (-20°C Ethanol) fixed HepG2 cells using 16916-1-AP (KRCC1 antibody) at dilution of 1:100 and CoraLite488-Conjugated AffiniPure Goat Anti-Rabbit IgG(H+L).



WB result of KRCC1 antibody (16916-1-AP; 1:3000; incubated at room temperature for 1.5 hours) with sh-Control and sh-KRCC1 transfected MCF-7 cells.