

For Research Use Only

# ATL3 Polyclonal antibody

Catalog Number: 16921-1-AP

Featured Product

18 Publications



## Basic Information

### Catalog Number:

16921-1-AP

### Size:

150ul, Concentration: 450 ug/ml by Nanodrop;

### Source:

Rabbit

### Isotype:

IgG

### Immunogen Catalog Number:

AG10279

### GenBank Accession Number:

BC077727

### GeneID (NCBI):

25923

### UNIPROT ID:

Q6DD88

### Full Name:

atlastin GTPase 3

### Calculated MW:

541 aa, 61 kDa

### Observed MW:

61 kDa

### Purification Method:

Antigen affinity purification

### Recommended Dilutions:

WB 1:2000-1:12000

IP 0.5-4.0 ug for 1.0-3.0 mg of total protein lysate

IHC 1:50-1:500

IF/ICC 1:50-1:500

## Applications

### Tested Applications:

WB, IHC, IF/ICC, IP, ELISA

### Cited Applications:

WB, IF, IP, ColP

### Species Specificity:

human, mouse, rat

### Cited Species:

human, mouse, monkey

### Positive Controls:

WB: HEK-293T cells, HEK-293 cells, HeLa cells, HepG2 cells, mouse liver tissue, SMMC-7721 cells, Jurkat cells, NIH/3T3 cells, rat liver tissue

IP: HeLa cells,

IHC: human stomach cancer tissue,

IF/ICC: HeLa cells, HepG2 cells

**Note-IHC: suggested antigen retrieval with TE buffer pH 9.0; (\*) Alternatively, antigen retrieval may be performed with citrate buffer pH 6.0**

## Background Information

ATL3, belonging to a class of dynamin-like GTPase, was reported to mediate ER fusion. ATL3 is required for the proper formation of the network of interconnected tubules of the endoplasmic reticulum. ATL3 functions as a receptor for ER-phagy, promoting tubular ER degradation upon starvation. Mutations in this gene may be associated with hereditary sensory neuropathy type IF.

## Notable Publications

Author	Pubmed ID	Journal	Application
Pengli Zheng	30030520	Cell Res	WB
Qingzhou Chen	30773365	Curr Biol	ColP, WB
Pengli Zheng	34912111	Nature	WB, IP

## Storage

### Storage:

Store at -20°C. Stable for one year after shipment.

### Storage Buffer:

PBS with 0.02% sodium azide and 50% glycerol pH 7.3.

Aliquoting is unnecessary for -20°C storage

\*\*\* 20ul sizes contain 0.1% BSA

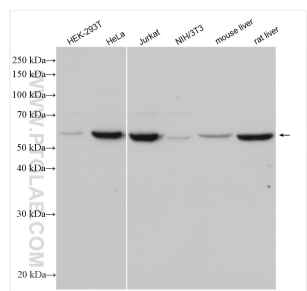
For technical support and original validation data for this product please contact:

T: 1 (888) 4PTGLAB (1-888-478-4522) (toll free in USA), or 1(312) 455-8498 (outside USA)

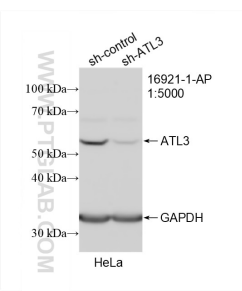
E: [proteintech@ptglab.com](mailto:proteintech@ptglab.com)  
W: [ptglab.com](http://ptglab.com)

This product is exclusively available under Proteintech Group brand and is not available to purchase from any other manufacturer.

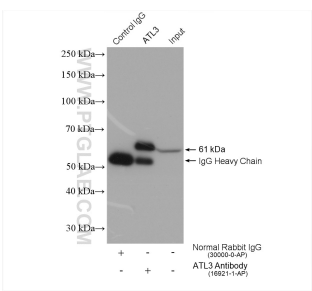
Selected Validation Data



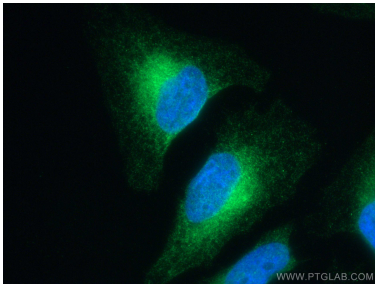
Various lysates were subjected to SDS PAGE followed by western blot with 16921-1-AP (ATL3 antibody) at dilution of 1:6000 incubated at room temperature for 1.5 hours.



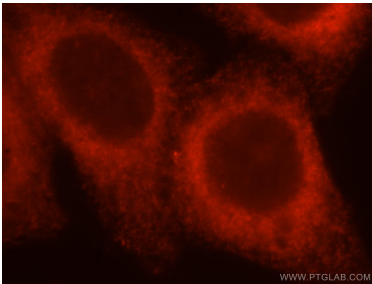
WB result of ATL3 antibody (16921-1-AP; 1:5000; incubated at room temperature for 1.5 hours) with sh-Control and sh-ATL3 transfected HeLa cells.



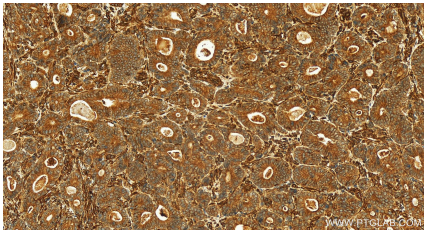
IP result of anti-ATL3 (IP:16921-1-AP, 4ug; Detection:16921-1-AP 1:5000) with HeLa cells lysate 1720 ug.



Immunofluorescent analysis of (4% PFA) fixed HeLa cells using ATL3 antibody (16921-1-AP) at dilution of 1:200 and CoraLite® 488-Conjugated AffiniPure Goat Anti-Rabbit IgG(H+L).



Immunofluorescent analysis of HepG2 cells, using ATL3 antibody 16921-1-AP at 1:25 dilution and Rhodamine-labeled goat anti-rabbit IgG (red).



Immunohistochemical analysis of paraffin-embedded human stomach cancer tissue slide using 16921-1-AP (ATL3 antibody) at dilution of 1:200 (under 20x lens). Heat mediated antigen retrieval with Tris-EDTA buffer (pH 9.0).